



Welcome to Fife

Where a Warm Welcome Awaits

Accommodation Guide

welcometofife.com/accommodation



Accommodation for Travel Trade In Fife

Nestled on Scotland's stunning east coast, Fife offers a diverse range of accommodation options to suit every traveller, from luxury spa resorts and charming country inns to coastal retreats, boutique hotels, cosy B&Bs, and self-catering cottages full of character. Whether your clients are visiting for golf, heritage, food and drink, or simply to relax and explore the Kingdom's beautiful beaches and historic towns, Fife has the perfect place to stay.

This brochure has been designed to help you navigate the wide array of accommodation choices available across the region, with details to support your planning and tailor unforgettable itineraries for your clients. Fife's hospitality providers pride themselves on warm welcomes, personal service, and local flair, ensuring every visit is as comfortable as it is memorable.



NEW, The Kithmore St Andrews Opening 2026



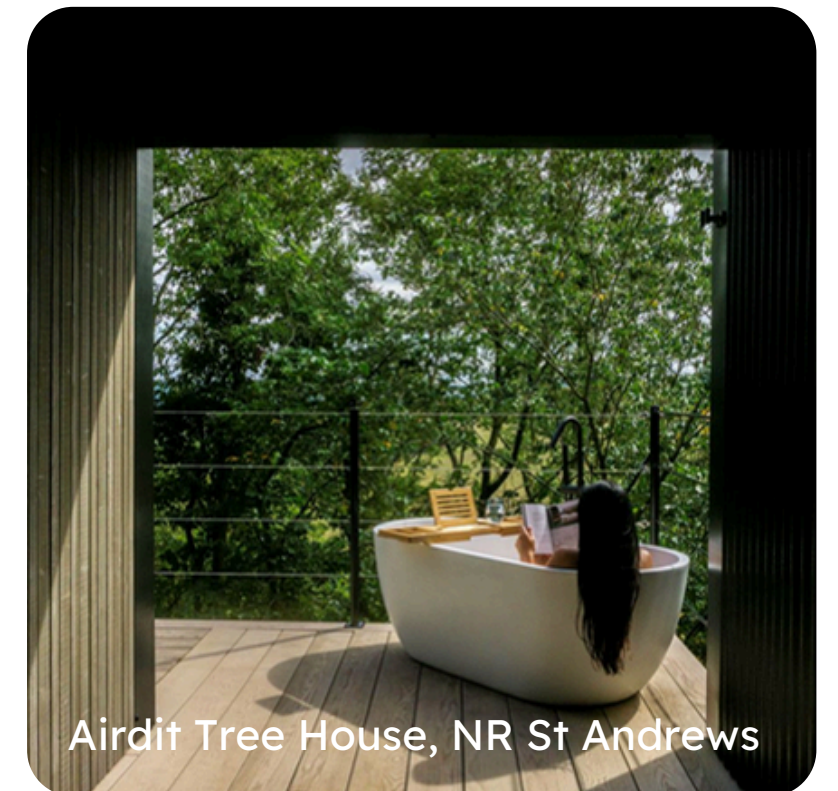
Silverburn Park, Campsite



Dean Park Hotel, Kirkcaldy



Garvock House Hotel, Dunfermline



Airdit Tree House, NR St Andrews



Bed & Breakfast's Guest Houses



Craighall Steadings

Location: North Fife, 20 minutes from St Andrews

Craighall Steading is a boutique countryside B&B just outside Ceres, offering sweeping views of the countryside and easy access to St Andrews and the wider Fife region. Set in a peaceful, spacious setting, it provides an ideal base for relaxed touring.

Awarded Green Tourism Gold and AA 4 Star Gold, the experience combines sustainability with high standards of comfort and design. Owner-operated and thoughtfully curated, Craighall Steading delivers warm, personal hospitality and a quietly luxurious stay for FIT travellers seeking an authentic Scottish experience.



Contact Details

Email: hello@craighallsteading.co.uk

Address: Ceres, Fife, KY15 5PT

Website: craighallsteading.co.uk



21KR Bed and Breakfast & Lomond Neuk Self Catering

Location: Nestled in the hear of St Andrews

21 KR Bed & Breakfast and Lamond Neuk Self-Catering provide high-quality accommodation in St Andrews, catering to both short breaks and longer stays. 21 KR is a refined, Scandinavian-inspired B&B offering four stylish en-suite rooms, quality breakfasts and personalised hospitality in a peaceful residential setting, ideal for couples and golf travellers. Lamond Neuk is a contemporary self-catering property sleeping up to seven, featuring generous living space, modern amenities and private outdoor areas, perfectly located close to the town centre, beaches and world-class golf courses.

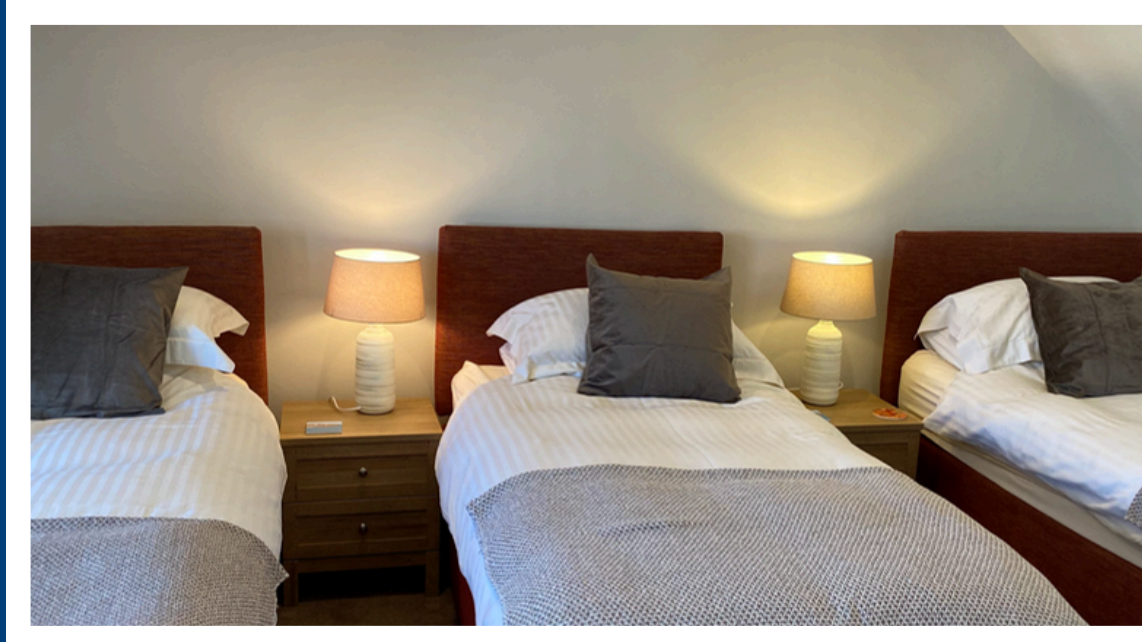


Contact Details

Email: claire@21kr.co.uk

Address: 21 Kilrymont Road, St Andrews, KY16 8DE

Website: 21kr.co.uk



The Honey Pot Guest House

Location: Crail East Neuk of Fife, perfect for exploring the Fife Coastal Path. 20 Min from St Andrews

Tucked away in the picturesque village of Crail, The Honey Pot Guest House & Tearoom offers cosy, comfortable en-suite rooms with a warm, homely atmosphere. Ideal for couples and small groups, this charming retreat is perfect for exploring the East Neuk and nearby St Andrews. Guests can enjoy a freshly prepared breakfast and the popular on-site tearoom, known for its home baking, local produce, and friendly, relaxed service.



Contact Details

Email: info@honeypotcrail.co.uk

Address: 6 High Street South, Crail , KY10 3TD

Website: honeypot.co.uk

Perfect for FIT



The Guardbridge Inn

Location: Gaurdbridge, just outside St Andrews with easy access to Leuchars Train Station.

The Guardbridge Inn offers newly refurbished ensuite rooms designed for comfort, each featuring contemporary bathrooms, quality bedding, modern furnishings and complimentary high-speed WiFi. Thoughtfully decorated and conveniently located above the inn, the rooms provide a cosy base for short breaks, work trips or exploring the surrounding area. Combined with homemade, locally sourced meals, a welcoming bar, and a spacious beer garden, the Guardbridge Inn delivers a warm and relaxed stay for every guest.



Contact Details

Email: csdawson@hotmail.co.uk
Address: Old St Andrews Rd, Gaurdbridge,
Website: guardbridgeinn.co.uk



The Dundonald Guesthouse & Cottage

Location: Culross village, 15 min from Dunfermline.
Great location for Fife Coastal Path

Located in the heart of Culross, The Dundonald is a beautifully renovated 18th-century guesthouse offering boutique-style en-suite rooms with a blend of historic charm and modern comfort. Each room is individually styled with thoughtful details, ideal for couples or small groups looking to explore this characterful village. With warm hospitality, delicious breakfasts, and a peaceful setting near the Fife Coastal Path, it's a perfect base for a relaxing stay.



Contact Details

Email: hello@thedundonald.com
Address: 6 Mid Causeway, Culross, KY12 8HS
Website: thedundonald.com



The Cairns, Leven

Location: Walking distance to train station, Perfect for Coastal Path

The Cairns Leven is a stylish, digitally-accessed guesthouse on Leven's seafront—perfectly positioned for group tours, FITs, and coastal itineraries. Offering a mix of modern en-suite rooms (including family, twin, and accessible options), all with smart TVs and Wi-Fi, it's ideal for both leisure and business travellers. A self-serve breakfast area adds flexibility for early departures. Just steps from the Fife Coastal Path and a short drive from golf courses and distilleries, it's a great base for exploring the East Neuk and beyond.



Contact Details

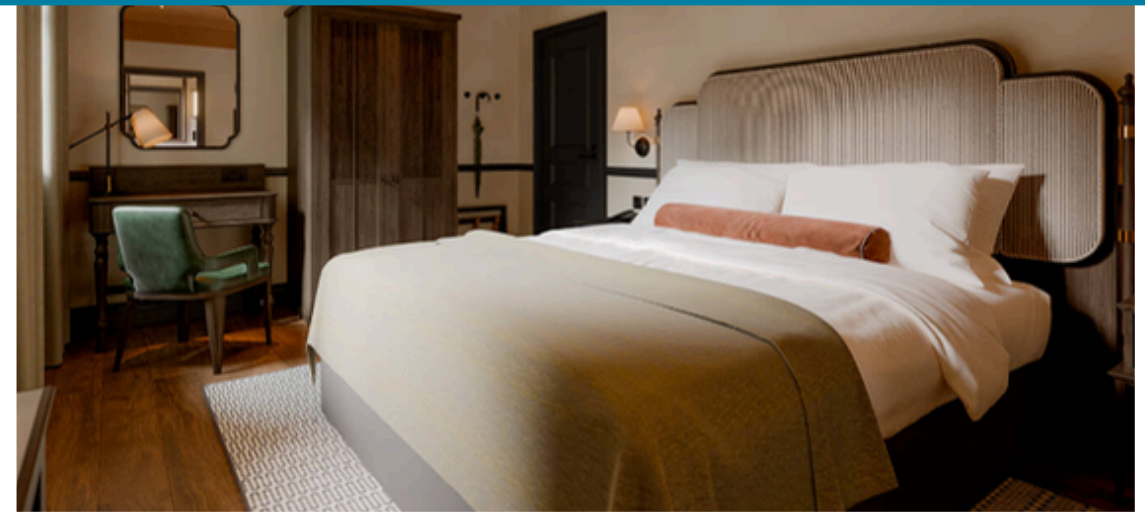
Email: thecairnsleven@gmail.com
Address: Leven Prom, KY8 4PH
Website: thecairnsleven.com



The Dean Park Hotel

Hotels

Hotels Perfect for Groups of Any Size



The Kithmore Hotel, St Andrews

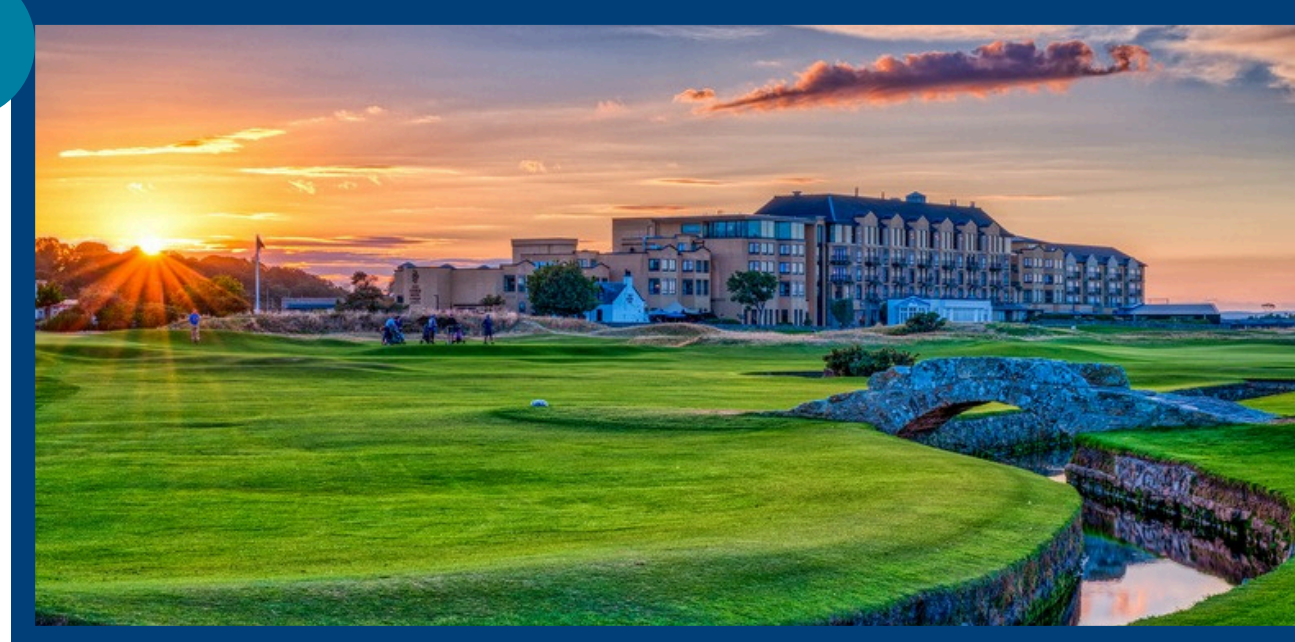
Location: Located in the heart of St Andrews

Opening Summer 2026, The Kithmore is a newly transformed boutique hotel offering 44 rooms, from cosy comfort options to spacious suites, alongside a 60-cover bar and restaurant with an extended terrace. Expect warm, Scottish hospitality, contemporary design, and menus celebrating local produce—perfect for golfers, leisure stays, and relaxed gatherings. Formerly the Ardgowan Hotel, the property has undergone a multi-million-pound refurbishment and redesign to create a modern classic.



Contact Details

Email: kathryn@thekithmore.com
Address: St Andrews, KY16 9HX
Website: thekithmore.com



Old Course Hotel Resort & Spa

Location: Located in the heart of St Andrews

Overlooking the world-famous Old Course and West Sands Beach, the Old Course Hotel offers luxurious five-star accommodation in the heart of St Andrews. Elegant, spacious rooms and suites combine classic style with modern comforts, many with stunning golf course or sea views. Ideal for leisure travellers and golf enthusiasts alike, the hotel features award-winning dining, a rooftop spa, and warm Scottish hospitality in an iconic and unforgettable setting.



Contact Details

Email: reservations@oldcoursehotel.co.uk
Address: St Andrews, KY16 9SP
Website: oldcoursehotel.co.uk



Rusacks, St Andrews

Location: Located in the heart of St Andrews

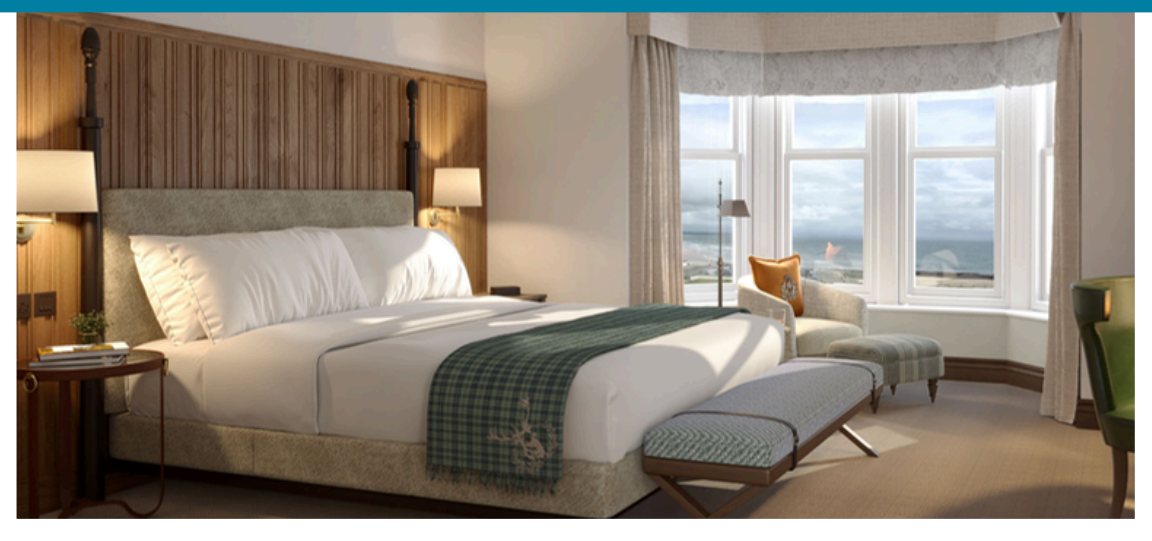
Set beside the iconic Old Course, Rusacks St Andrews offers luxurious, Highlands-inspired rooms blending historic charm with modern comfort. Many rooms feature stunning views over the 17th and 18th holes or West Sands Beach. Guests enjoy plush bedding, Floris toiletries, and thoughtful amenities like Nespresso machines and smart TVs. Ideal for couples, families, or golf enthusiasts, this elegant hotel provides a stylish retreat in the heart of St Andrews.



Contact Details

Email: sales@rusacksstandrews.co.uk
Address: St Andrews, KY16 9JQ
Website: marineandlawn.com/rusacksstandrews

Hotels for FIT, Small & Medium Groups



Seaton House

Location: Located in the heart of St Andrews

Seaton House offers 42 luxury bedrooms including 5 stunning suites and 3 junior suites. Guests can choose a sea or garden view, with 5 rooms benefitting from their own private terrace. Every detail has been carefully considered, from luxurious furnishings to stylish modern interiors with a subtle nod to the rich Scottish heritage of the house.



Contact Details

Email: Stephanie.Lee@seatonhouse.com
Address: The Scores, St Andrews, KY16 9BB
Website: seatonhouse.com



Rufflets Country House

Location: 5 Min Drive from St Andrews

Rufflets Hotel offers award-winning gardens, free Wi-Fi and a contemporary restaurant. The hotel is just outside St Andrews centre, a 5-minute drive from St Andrews Old Course. There is also free on-site parking. The bright rooms are individually decorated, and each has a modern bathroom with Molton Brown toiletries. All rooms feature a flat-screen TV, iPod dock, and tea/coffee facilities with Scottish shortbread. Seasons Restaurant is located within the main house overlooking the garden and offers lunch and dinner menus using local produce. Afternoon teas and light lunches are also available, featuring fresh produce from the kitchen garden



Contact Details

Email: reservations@rufflets.co.uk
Address: St Andrews KY16 9TX
Website: rufflets.co.uk



Fairmont Hotel, St Andrews

Location: Situated 10 minutes from St Andrews Town Centre by car \ coach

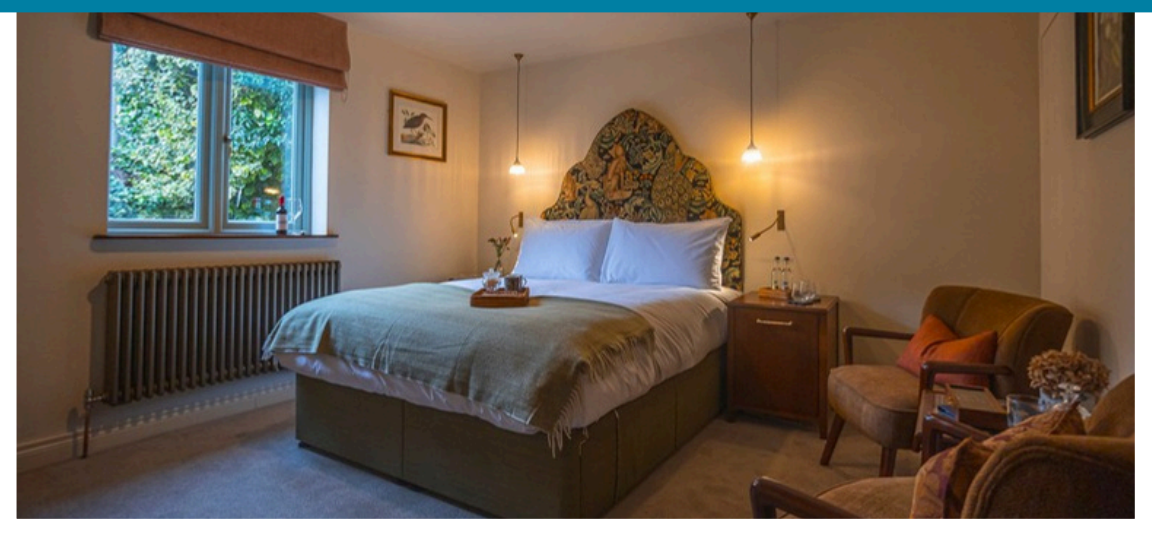
Set on a 520 acre estate with a unique coastal setting, Fairmont St Andrews encapsulates luxury, elegance and truly breath-taking surroundings in the 'Home of Golf'. A truly unique and special venue that makes your visit one to remember with its peaceful setting and stunning cliff top views of St Andrews and the North Sea.



Contact Details

Address: St Andrews, KY16 8PN
Website: fairmont.com/st-andrews-scotland

Hotels for FIT, Small & Medium Groups



The Boars Head

Location: High Street in Auchtermuchty, just off the A91

The Boar's Head offers four beautifully refurbished adult-only king rooms, each with a private ensuite, Nespresso machine, minibar, complimentary whisky, and luxury goose-down bedding. Rooms feature modern touches such as WiFi, hairdryers and thoughtful homemade treats, with select rooms including soft seating areas. Guests enjoy exceptional Scottish dining, a warm welcome, and stylish interiors throughout this small, design-led village inn



Contact Details

Email: info@theboarsheadfife.co.uk
Address: Auchtermuchty, KY14 7AP
Website: theboarsheadfife.co.uk



SPACE St Andrews

Location: Located in St Andrews within walking distance of main attractions

SPACE St Andrews offers flexible short stays ideal for summer lets, internships, language courses and visiting students. Guests can choose from fully furnished self-contained studios or multi-bedroom apartments designed for modern living, each featuring ensuite facilities, kitchens, workspaces and bright open-plan layouts. Stays are completely flexible, allowing visitors to book for as little or as long as needed.



Contact Details

Email: yasminesmith@scotsman.group
Address: St Andrews KY16 8DQ
Website: thestudent.space/short-stays/



St Andrews University

Location: Accommodation across St Andrews

The University of St Andrews offers great-value holiday accommodation across four locations, including Agnes Blackadder Hall with double ensuite rooms, David Russell Apartments featuring spacious ensuite bedrooms and family-friendly self-catering options, and McIntosh Hall and University Hall, both providing affordable single or twin B&B rooms. Guests enjoy comfortable facilities, central access to the town, and a welcoming base for exploring beaches, historic sites and world-famous golf courses.



Contact Details

Email: ar226@st-andrews.ac.uk
Address: St Andrews
Website: st-andrews.ac.uk/accommodation

Hotels Perfect for Groups of Any Size



Dean Park Hotel

Location: Mid Fife. Easy access to A92 to St Andrews and M90 to the North & South. Max travel time to anywhere in Fife 45 Min

A well-established hotel which has been successfully serving the local community for over 42 years. Hosting 33 bedrooms which have undergone an amazing transformation now oozing class and sophistication, they will blend themselves to suit your clients needs. The hotel can offer various dining options and link with partners to provide evening entertainment.



Contact Details

Email: events.manager@deanparkhotel.co.uk
Address: Chapel Level, Kirkcaldy, KY2 6HF
Website: deanparkhotel.co.uk



Double Tree by Hilton, Queensferry Crossing

Location: West Fife, North of Edinburgh, easy access to M90 to the North and South. 20 Min to Edinburgh Airport

Overlooking the iconic Queensferry Crossing and Firth of Forth, DoubleTree by Hilton - Queensferry Crossing offers stylish, contemporary bedrooms in a stunning waterfront setting. With spacious, well-appointed rooms—many offering breathtaking views—it's ideal for groups of up to 100 guests exploring the area. Expect modern comforts, warm hospitality, and a signature DoubleTree cookie on arrival, all just a short journey from both Edinburgh and the heart of Fife.



Contact Details

Email: dos@doubletree-queensferry.co.uk
Address: St Margarets Head, North Queensferry, KY11 1HP
Website: doubletree-queensferrycrossing



The Old Manor Hotel

Location: 10 Min from Leven train station, perfect for Fife Coastal path, 25 min to St Andrews.

Perched above the Firth of Forth, The Old Manor Hotel offers elegant, contemporary rooms—many with private balconies overlooking Lundin Links Golf Course and the sea. Guests enjoy en-suite bathrooms, plush bedding, and thoughtful amenities. Ideal for couples, families, and golf enthusiasts, the hotel provides a tranquil base to explore Fife's coastal villages, with warm hospitality and stunning views enhancing every stay.



Contact Details

Email: reception@theoldmanorhotel.co.uk
Address: Lundin Links, KY8 6AJ
Website: theoldmanorhote.co.uk

Hotels for FIT, Small & Medium Groups



The Laurel Bank Hotel

Location: Crossford, Dunfermline just 7 minute drive to Dunfermline

Best Western Plus Keavil House Hotel is a country-house retreat with 72 bedrooms, set in landscaped gardens and offering contemporary comforts across standard, executive and family options. Guests enjoy the Picture of Health Club & Spa with a 15-metre pool, sauna, steam room, jacuzzi and gym, plus treatments, and dining in the Botanist Restaurant showcasing Scottish produce. It's a relaxing base for short breaks, celebrations and business alike.



Contact Details

Email: hello@laurelbankhotel.co.uk
Address: Markinch, KY7 6DB
Website: laurelbankhotel.co.uk



Garvock House Hotel

Location: 10 min walk to Dunfermline City Train station and city centre.

Set within two acres of landscaped gardens, Garvock House Hotel offers 26 individually styled en-suite rooms, each blending period charm with modern comfort. Guests can unwind in deep baths with Gilchrist & Soames toiletries, enjoy feather-soft linen, and relax in a peaceful setting overlooking historic Dunfermline. The hotel provides warm Scottish hospitality, complimentary Wi-Fi, and ample parking, making it an ideal retreat for couples, families, and small groups exploring Fife



Contact Details

Email: sales@garvock.co.uk
Address: Dunfermline, KY12 7TU
Website: garvock.co.uk



The Inn at Charlestown

Location: 10 min from Forth Bridges and to Dunfermline city centre. Great for Coastal Path

Nestled in the picturesque village of Charlestown, The Inn at Charlestown offers newly refurbished en-suite rooms, many boasting stunning views over the Firth of Forth and the iconic Forth Bridges. Guests can enjoy modern comforts, including tea and coffee facilities, Wi-Fi, and flat-screen TVs. Ideal for couples, families, and small groups, the hotel provides a tranquil base to explore nearby attractions, with Dunfermline and Edinburgh easily



Contact Details

Email: info@theinnatcharlestown.co.uk
Address: Limekilns, Dunfermline, KY11 3EE
Website: theinnatcharlestown.co.uk

Hotels for FIT, & Small Groups



The Crusoe

Location: Situated in Lower Largo near Leven, perfect for access to the Fife Coastal Path.

Set right on the beach in the charming fishing village of Lower Largo, The Crusoe offers seven stylish sea-view rooms ideal for FIT and small group travel. Guests enjoy locally sourced cuisine, a cosy bar with Scottish spirits, and direct access to the Fife Coastal Path. With award-winning hospitality and flexible dining options, it's a perfect base for bespoke itineraries exploring the East Neuk, St Andrews, and beyond.



Contact Details

Email: info@thecrusoe.com
Address: Lower Largo, Leven, KY8 6BT
Website: thecrusoe.com



The Ship Inn

Location: Situated in the East Neuk of Fife perfect for Fife Coastal Path and exploring north east Fife.

Overlooking Elie Bay, The Ship Inn offers six nautically inspired rooms four with sea views ideal for FIT and small groups. Guests enjoy seasonal Scottish cuisine, a beachside beer garden, and unique beach cricket matches. Amenities include a courtesy bus within a 5-mile radius and a private dining space with panoramic sea views. Perfect for exploring the East Neuk's coastal paths, fishing villages, and nearby St Andrews.



Contact Details

Email: info@shipinn.scot
Address: Elie, KY9 1DT
Website: shipinn.scot



Aberdour Hotel

Location: Situated in South West Fife, Aberdour is perfect for the Fife Coastal Path, with great train connections.

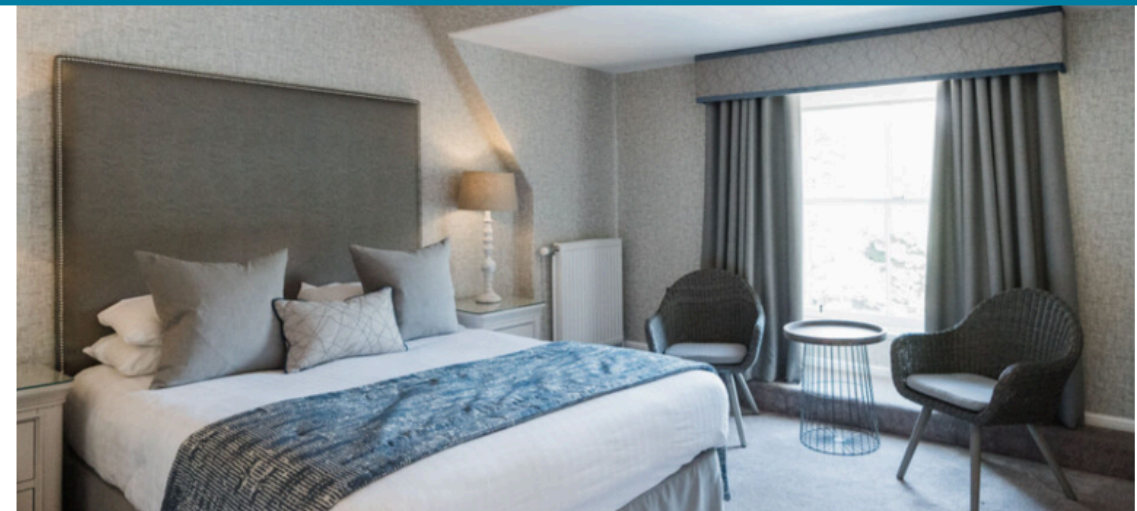
Situated in the heart of the historic coastal village of Aberdour, The Aberdour Hotel is a charming 17th-century former coaching inn offering 16 en-suite rooms, including courtyard accommodations with ground-floor access. Just a minute's walk from the train station, it's an ideal base for exploring Edinburgh, St Andrews, and Fife's renowned golf courses. Guests can enjoy fresh Scottish cuisine in the on-site restaurant and relax in the beer garden.



Contact Details

Email: reception@aberdourhotel.co.uk
Address: Aberdour KY3 0SW
Website: aberdourhotel.co.uk

Hotels for FIT, & Small Groups



Balburnie House Hotel

Location: Markinch just outside Glenrothes and 5 minutes from the A92

Balbirnie House offers a boutique country-house experience with 31 individually designed bedrooms, including suites with sitting rooms, spacious deluxe rooms with king-size beds, and charming classic rooms tucked throughout the Grade A listed mansion. Each room blends period character with modern comforts, many boasting garden or parkland views. Guests enjoy elegant dining, beautiful surroundings and warm hospitality in one of Scotland's finest small luxury hotels



Contact Details

Email: info@balbirnie.co.uk
Address: Balburnie Park, Markinch, KY7 6DB
Website: balbirnie.co.uk



The Laurel Bank Hotel

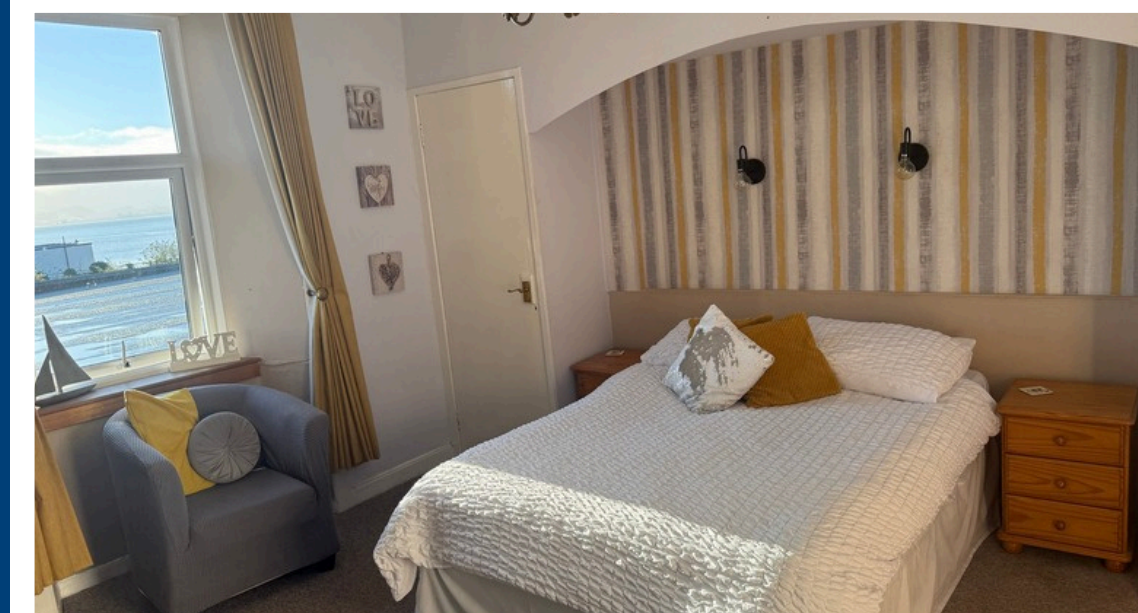
Location: Markinch just outside Glenrothes and 5 minutes from the A92

The Laurelbank Hotel is a stylish neighbourhood boutique hotel offering 12 comfortable rooms, including family and triple options, each with private bathrooms, tea and coffee facilities, free WiFi, workspaces and TVs. Known for warm Scottish hospitality, it features a popular restaurant serving fresh, locally sourced dishes, along with a welcoming bar and beer garden. Guests appreciate its cleanliness, friendly staff and great value



Contact Details

Email: hello@laurelbankhotel.co.uk
Address: Markinch, Glenrothes KY7 6DB
Website: laurelbankhotel.co.uk



Burntisland Sands Hotel

Location: Situated in South West Fife, Burntisland is perfect for the Fife Coastal Path, with great train connections.

Burntisland Sands Hotel offers a friendly beachfront stay with four en-suite bedrooms, three featuring impressive sea views. Rooms include modern amenities such as free WiFi, flat-screen TVs, workspaces and private bathrooms, creating a comfortable base for coastal getaways. Guests enjoy freshly prepared Scottish dishes in the restaurant, a welcoming bar, and relaxed outdoor seating areas. Family rooms and child-friendly facilities add to its appeal.



Contact Details

Email: mail@burntislandsands.co.uk
Address: Burntisland, KY3 9JX
Website: burntislandsands.co.uk



Self Catering

Ideal for Family Groups & FIT



Lindores Lodges

Location: Located in North Fife, close to main road networks

Lindores in Fife offers a collection of award-winning self-catering lodges and cottages, perfect for families, couples, and groups. Set on a scenic farm estate near Newburgh, each property combines stylish interiors with luxurious touches, think hot tubs, panoramic views, and dog-friendly enclosed gardens. Accommodating 2-8 guests, the lodges are ideal for relaxing breaks or active getaways, with walking trails, golf, and distilleries nearby. A tranquil rural base within easy reach of St Andrews and Perth.

   On Application

Contact Details

Email: info@lindores.co.uk
Address: Newburgh, KY14 6HU
Website: lindores.co.uk



St Andrews Coach Houses

Location: Located 10 min from St Andrews

St Andrews Coach Houses offers a collection of luxury self-catering cottages nestled in the tranquil Fife countryside, just minutes from St Andrews. Ideal for families, couples, and groups, the estate features four stylish properties: three two-bedroom coach houses, Castle, Dukes, and Eden (sleeping 4-5) and Priory Lodge, a three-bedroom retreat with a private hot tub. Each cottage boasts contemporary interiors, private patios, and scenic views of the working farm. Perfect for golf breaks or coastal getaways, with an on-site activity barn and easy access to beaches and historic attractions.

   On Application

Contact Details

Email: info@standrewscoachhouses.co.uk
Address: St Andrews, KY16 8NP
Website: standrewscoachhouses.co.uk



Morton of Pitmilly

Location: 15 Min from St Andrews and the East Neuk of Fife

A countryside Resort offers award-winning self-catering accommodation near St Andrews, Fife. Set amidst scenic farmland, the resort features 16 stylish cottages and boutique houses, accommodating 1-10 guests, ideal for families, couples, and groups. Guests enjoy extensive leisure facilities, including an indoor pool, spa, tennis courts, gym, and walking trails. On-site amenities include a pop-up café and pantry, enhancing the self-catering experience.

   On Application

Contact Details

Email: stay@pitmilly.co.uk
Address: Kingsbarns, KY16 8QF
Website: pitmilly.co.uk

Ideal for Family Groups & FIT



Sandford Cottages

Location: 10 Miles from St Andrews and 5 Miles from Dundee

Sandford Country Cottages offers six luxury 5-star self-catering properties nestled in the Fife countryside. Set within the restored west wing of a B-listed Arts and Crafts house designed by MH Baillie Scott in 1902, each cottage blends period charm with modern comfort. Accommodating 1-6 guests, all feature en-suite bedrooms, open-plan living areas with wood-burning stoves, and private terraces or balconies. Guests can enjoy expansive gardens, a treehouse, and a BBQ hut. Ideal for families, couples, and groups seeking a tranquil yet well-connected base



On Application

Contact Details

Email: evelyn@sandfordcountrycottages.co.uk

Address: Newport on Tay, DD6 8RG

Website: sandfordcountrycottages.co.uk



No1 Apartments

Location: In the heart of St Andrews

No.1 Apartments offers a collection of stylish self-catering accommodations in the heart of St Andrews, ideal for couples, families, and golf enthusiasts. Choose from one- and two-bedroom apartments at South Street and St Mary's Place, or the spacious West Park House, accommodating up to 16 guests. Each apartment features fully equipped kitchens, washer/dryers, rainfall showers, and luxury toiletries. Enjoy complimentary Wi-Fi, smart TVs, and Nespresso machines. Located within walking distance of historic sites, beaches, and golf courses, No.1 Apartments provides a comfortable and convenient base for exploring St Andrews.



On Application

Contact Details

Email: no1reservations@scotsmancollection.co.uk

Address: St Andrews, KY16 9UY

Website: no1apartments.co.uk



Madeira in Fife

Located just a short stroll from the East Neuk coastline

Madeira in Fife offers a serene collection of six beautifully refurbished cottages and three unique treehouses, nestled within 10 acres of tranquil gardens near the charming village of Pittenweem. Ideal for couples, families, and groups, each accommodation blends rustic charm with modern comforts, including fully equipped kitchens, private terraces, and access to outdoor spaces. Guests can enjoy amenities such as a hot tub, children's play areas, and scenic walking paths. Madeira in Fife provides a perfect base for exploring Fife's picturesque villages and coastal attractions.



On Application

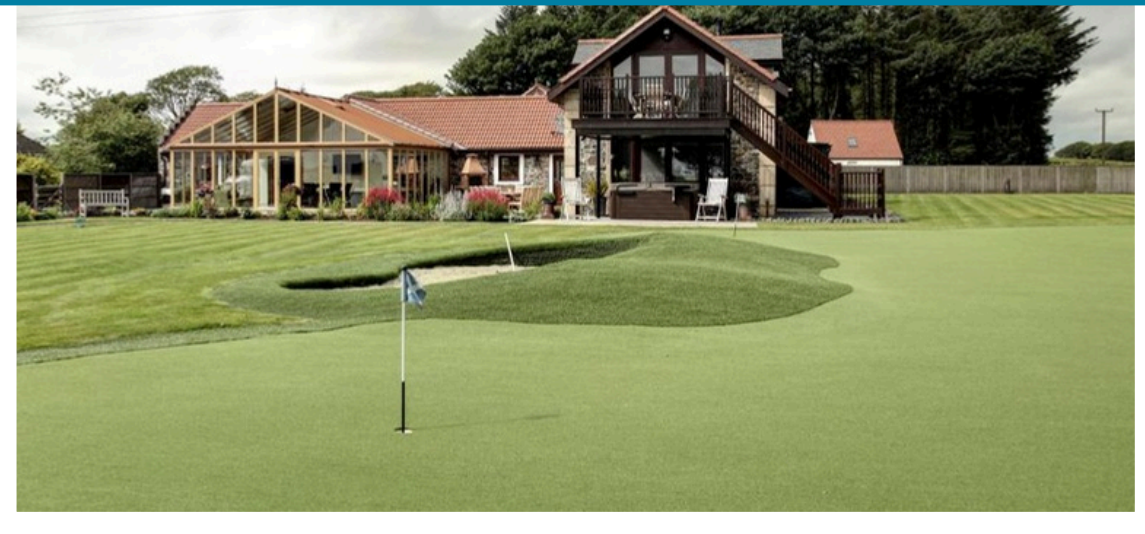
Contact Details

Email: enquiries@madeirainfife.com

Address: Grangemuir Estate, Pittenweem, KY10 2RB

Website: madeirainfife.com

Ideal for Family Groups & FIT



Hawkswood Country Estate

Location: 10 Minutes from St Andrews and East Neuk

Hawkswood Country Estate offers 5-star luxury self-catering accommodation, ideal for golf breaks, family gatherings, and group retreats. Set within 55 acres of tranquil Fife countryside, the estate features three elegant properties, Hawkswood House, The Roundel, and Bowhill House, each sleeping up to 10 guests in five en-suite bedrooms. Guests enjoy private hydro spas, BBQ patios, a 270-yard driving range, and short-game golf areas. With panoramic views, bespoke interiors, and optional concierge services, Hawkswood delivers a refined rural escape.



Contact Details

Email: luxury@hawkswoodcountryestate.com

Address: Peat Inn, KY15 5LL

Website: hawkswoodcountryestate.com



Cambo Estate

Location: 15 Minutes from St Andrews

Cambo Estate offers a diverse range of self-catering accommodations set within 1,200 acres of historic Fife countryside, just minutes from Kingsbarns Beach and St Andrews. Guests can choose from elegant Victorian guest rooms in Cambo House, spacious estate cottages, or eco-friendly woodland cabins like The Hideaway and The Bothy, operated by Off Grid Travel. Each option blends heritage charm with modern comforts, featuring fully equipped kitchens, cozy living areas, and access to expansive gardens and woodland trails. Ideal for families, couples, and groups seeking a tranquil coastal retreat.

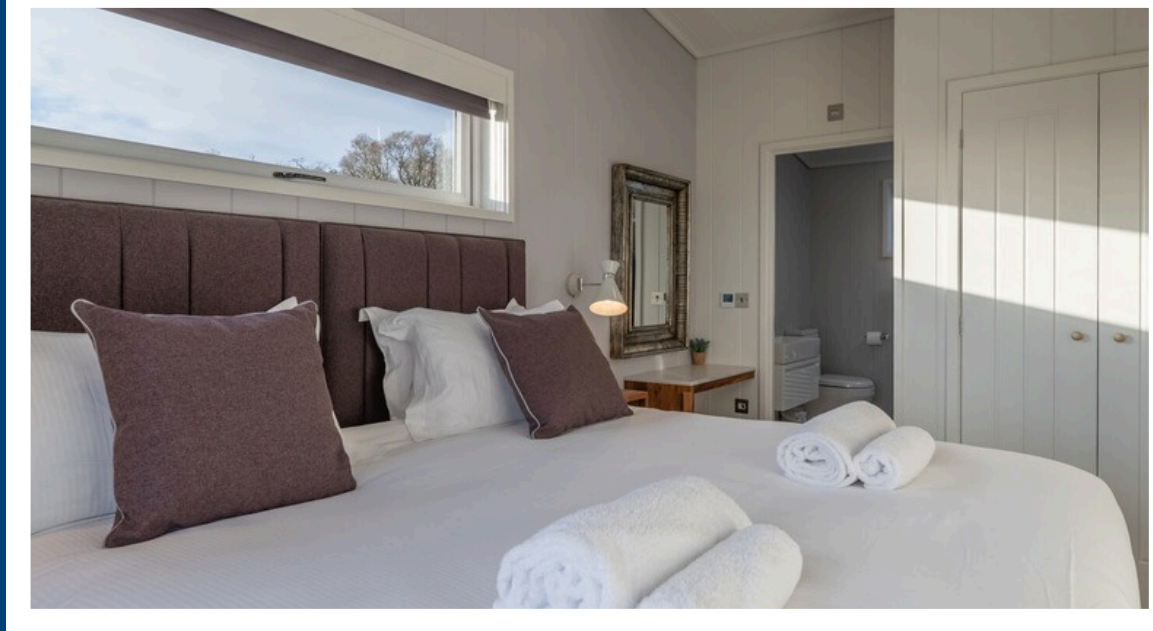


Contact Details

Email: cambo@camboestate.com

Address: Kingsbarns, KY16 8QD

Website: camboestate.com



Bonerbo Farm Luxury Lodges

Location: 5 Min Drive to Anstruther

Bonerbo Farm Coastal Retreats presents four luxurious self-catering lodges set amidst the serene East Neuk countryside, near St Andrews. Each lodge accommodates up to four guests and features two en-suite bedrooms, a private hot tub, wood-burning stove, and panoramic views over the Firth of Forth. Dog-friendly with enclosed gardens, the lodges offer modern amenities including fully equipped kitchens, underfloor heating, and Smart TVs. Situated on a working farm, guests can explore nearby coastal paths, charming fishing villages, and world-renowned golf courses, making it an ideal base for relaxation and adventure.



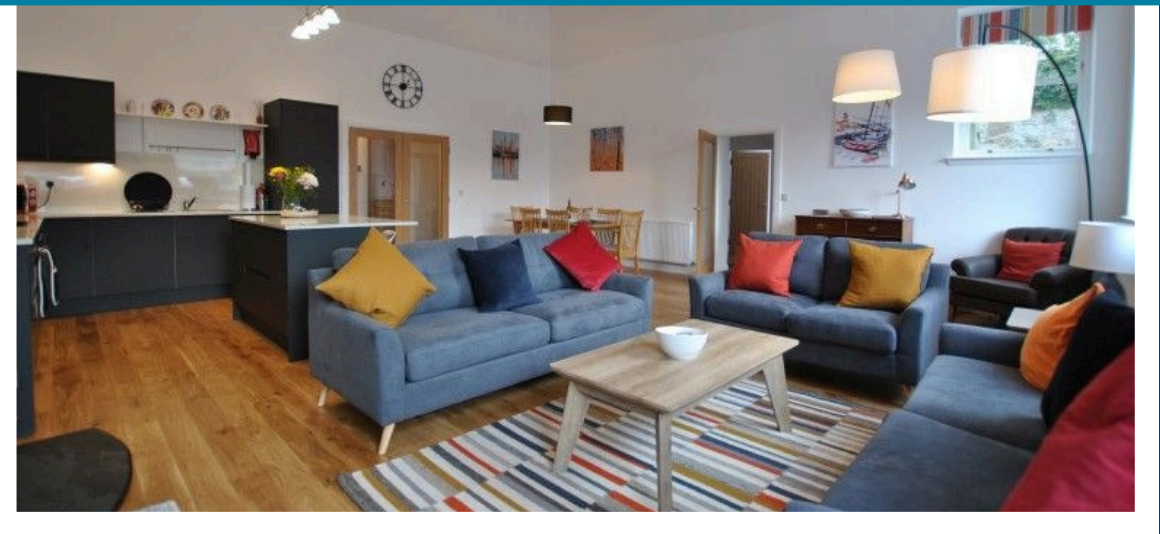
Contact Details

Email: info@luxurylodgesstandrews.co.uk

Address: Anstruther, KY10 3LA

Website: bonerbofarm.co.uk

Property Management Companies



Pittenweem Properties

Pittenweem Properties offers a portfolio of high-quality self-catering holiday homes across the scenic East Neuk of Fife, ideal for inclusion in Scotland travel itineraries. From charming coastal cottages to larger family-friendly accommodation, our properties provide flexible, comfortable stays in popular locations like Pittenweem, Anstruther and St Monans. Perfect for FITs, small groups, or themed tours including golf and heritage. Trade-friendly with excellent local knowledge, responsive support, and competitive rates. Partner with us for authentic, memorable experiences along Scotland's stunning east coast.

   On Application

Contact Details

Email: enquiries@pittenweemproperties.com
Address: East Neuk, KY10 3AA
Website: pittenweemproperties.com



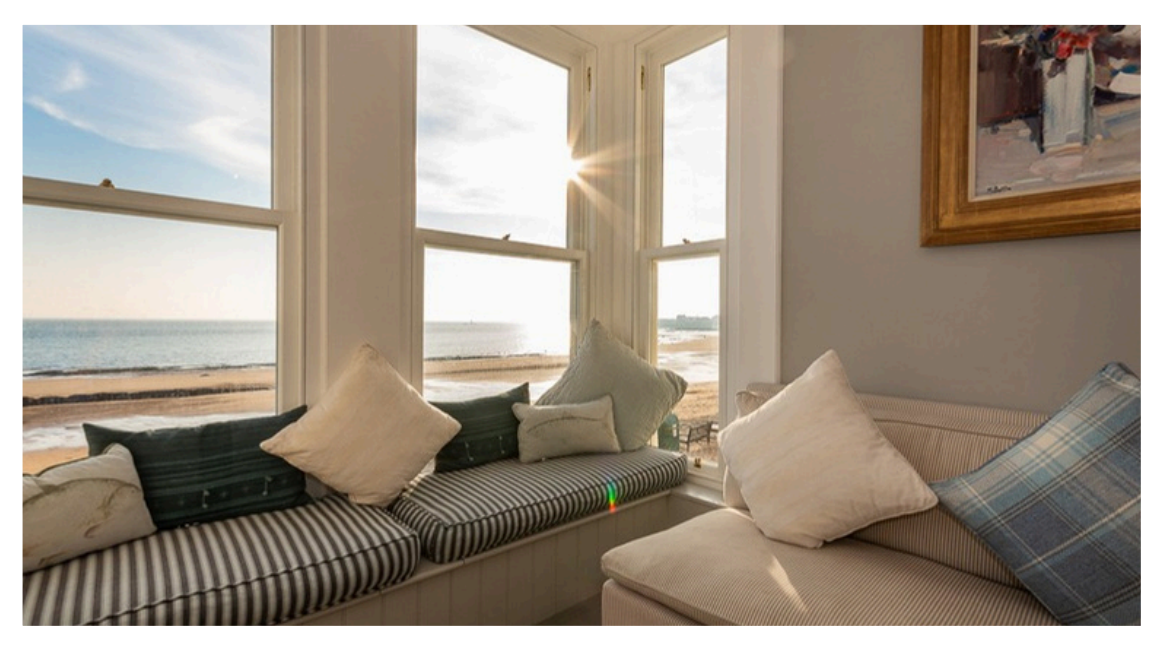
Guide Us Breaks

Guide Us Breaks offers expertly curated small group tours and bespoke travel experiences across Scotland, ideal for the travel trade market. With a focus on authentic, immersive itineraries, we cater to FITs and small groups seeking local insight, hidden gems, and meaningful connections. From whisky trails and historic tours to scenic adventures and cultural escapes, all tours are led by knowledgeable, passionate guides. We offer flexible options, trade-friendly pricing, and a commitment to quality experiences. Partner with us to deliver unforgettable Scottish journeys for your clients.

   On Application

Contact Details

Email: info@guideusbreaks.co.uk
Address: East Neuk, KY10 3AA
Website: guideusbreaks.co.uk



Elie Select

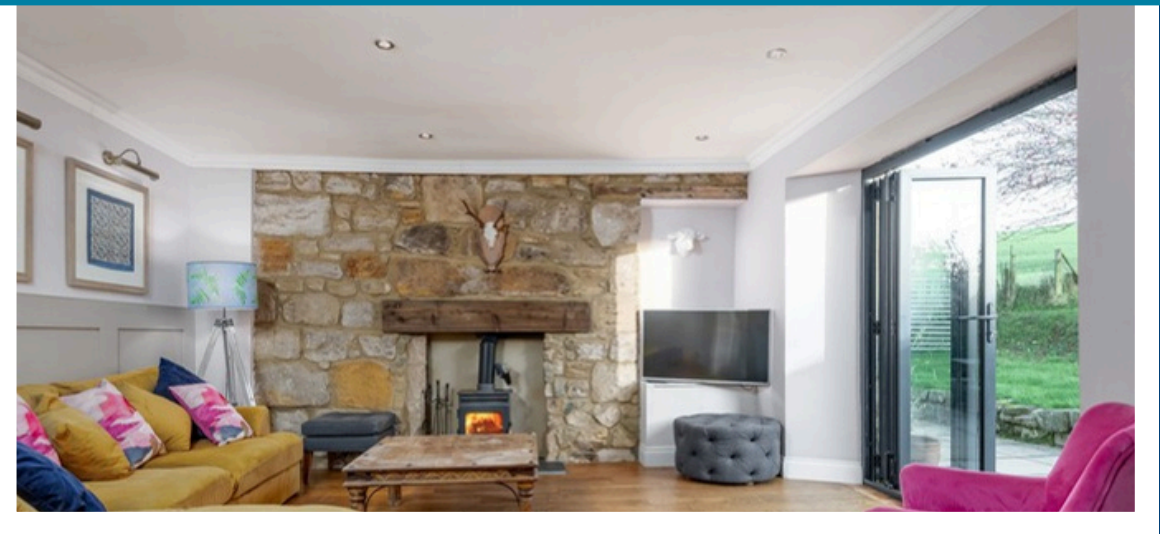
Elie Select offers an exclusive collection of premium self-catering properties in the sought-after East Neuk of Fife, centred around the picturesque village of Elie. Ideal for discerning FITs, families, or small group travellers, our elegant coastal homes combine luxury, comfort, and stunning seaside locations. Perfect for inclusion in golf, wellness, or leisure-focused itineraries, all properties are professionally managed with a personal touch. Travel trade partners benefit from flexible booking terms, trade rates, and local expertise. Elevate your Scotland product with curated stays through Elie Select.

   On Application

Contact Details

Email: enquiries@elieselect.com
Address: Elie
Website: elieselect.com

Property Management Companies



Short Stay St Andrews

Short Stay St Andrews offers a diverse portfolio of high-quality, self-catering accommodation across St Andrews and the surrounding area, ideal for FITs, golf groups, and leisure travellers. From modern apartments to spacious family homes, each property is professionally managed and fully equipped for a seamless stay. Perfectly positioned for exploring St Andrews' historic sites, beaches, and world-renowned golf courses. We provide trade-friendly rates, local insight, and reliable service, making us a trusted partner for tailored Scottish itineraries. Enhance your Scotland offering with flexible, comfortable stays in the Home of Golf.



Contact Details

Email: reservations@shortstaystandrews.com
Address: South Street, St Andrews, KY16 9EE
Website: shortstaystandrews.co.uk



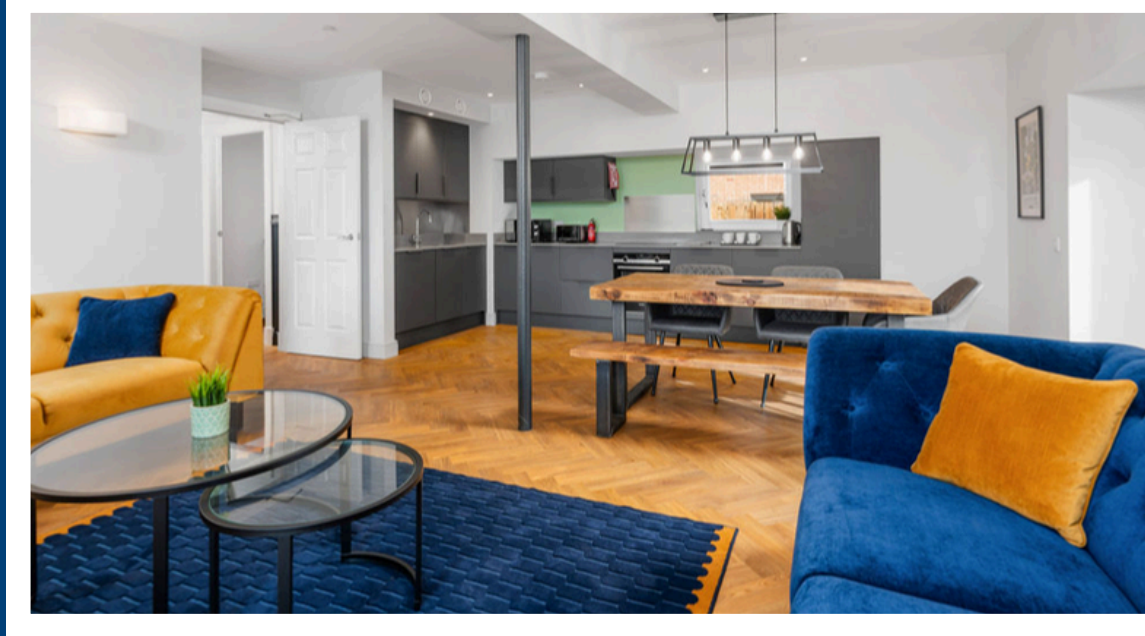
Andrean Links

Andrean Links specialises in luxury golf accommodation and bespoke travel experiences in St Andrews, the Home of Golf. Ideal for travel trade partners catering to high-end FITs and small golf groups, our exclusive townhouses and apartments offer premium comfort just steps from the Old Course. Combine beautifully appointed accommodation with curated golf itineraries, local concierge service, and insider access to world-famous courses. We offer trade-friendly rates, seamless coordination, and exceptional service. Partner with Andrean Links to deliver unforgettable, high-end golf experiences in Scotland's most iconic golfing destination.



Contact Details

Email: stay@andreanlinks.com
Address: Murray Park, St Andrews
Website: andreanlinks.com



Stay Dunfermline

Stay Dunfermline offers stylish, serviced accommodation in the historic city of Dunfermline, ideal for FITs, business travellers, and small groups exploring Central Scotland. Our modern apartments and homes combine hotel-level comfort with the flexibility of self-catering, all within easy reach of Edinburgh, the Highlands, and key Fife attractions. Perfect for heritage-focused tours, touring bases, or event stays. Travel trade partners benefit from competitive rates, flexible terms, and professional management. Choose Stay Dunfermline for reliable, well-located accommodation in one of Scotland's newest cities and oldest capitals.



Contact Details

Email: hello@staydunfermline.com
Address: Dunfermline
Website: staydunfermline.com



Accessible

Accommodation

Ideal for Family Groups & FIT



Accessible Accommodation

Accessible accommodation is vital for ensuring all visitors can enjoy Fife’s rich heritage, stunning coastline, and world-famous golf. Inclusive places to stay mean that everyone, regardless of mobility or needs, can explore the region with comfort and confidence. By offering step-free access, adapted bathrooms, and helpful amenities, Fife demonstrates a warm welcome to disabled visitors, older travellers, and families with young children. Accessible accommodation isn’t just good hospitality – it opens the door to memorable experiences for all, helping Fife grow as a truly inclusive and visitor-friendly destination.



The Rings Farm

Location: Just outside Cupar, about 15 minutes from St Andrews. Easy access to A92

Set in 90 acres of peaceful Fife countryside near Cupar, The Rings offers flexible, accessible self-catering accommodation for individuals, families, and groups of up to 16. With en-suite bedrooms, ceiling track hoists, profiling beds, and wet rooms, it’s designed for guests with diverse needs. Enjoy panoramic views, open-plan living spaces, and easy access to St Andrews and the East Neuk’s attractions



Contact Details

Email: ringfarm@hotmail.com
Address: Chance Inn, Fife, KY12 5PQ
Website: therings.co.uk



Homelands

Location: Located between Leven and the East Neuk, great location for exploring Fife

Nestled in mature woodlands overlooking the Firth of Forth, Homelands Trust-Fife offers nine purpose-built, luxury self-catering lodges in Lundin Links. Each lodge is thoughtfully designed for accessibility, featuring equipment like ceiling track hoists, profiling beds, and wet rooms. Ideal for individuals, families, or groups, guests can enjoy tranquil surroundings, coastal views, and easy access to the East Neuk’s charming villages and attractions



Contact Details

Email: info@homelands-fife.co.uk
Address: Lundin Links, KY8 6AT
Website: homelands-fife.co.uk



Unique Stays



Off Grid Travel

Location: 15 Minutes from St Andrews

Off Grid Travel offers zero-carbon, off-grid luxury cabins in Scotland's East Neuk of Fife, providing sustainable and immersive nature escapes. Their HideAway and Bothy cabins are designed with eco-friendly materials and powered by renewable energy, ensuring a minimal environmental footprint. Guests can enjoy activities like woodland walks, coastal exploration, and stargazing, all while disconnecting from digital distractions. Ideal for couples, families, and groups seeking a unique blend of comfort and conservation.

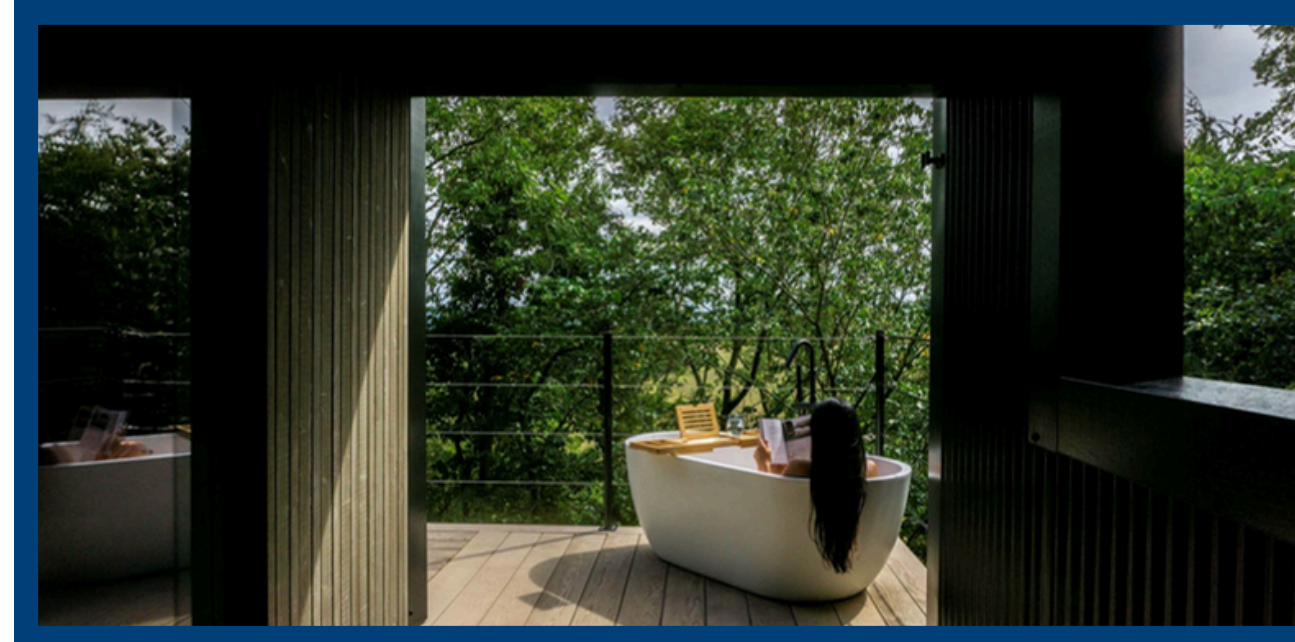


Contact Details

Email: info@offgrid-travel.com

Address: Cambo Estate, Kingsbarns,

Website: offgrid-travel.com



Airdit Tree House

Location: 15 Minutes from St Andrews

Airdit offers a secluded woodland retreat in Fife, Scotland, featuring the Bracken Treehouse, an eco-friendly cabin perched above the Eden Estuary. Designed for couples and solo travelers, it boasts modern luxuries like a skylight, outdoor bath, and panoramic forest views. Guests can also bring their own home on wheels with BYOH (Bring Your Own Home) parking spots, Eden View and The Copse. Perfect for those seeking a tranquil escape amidst nature, yet close to St Andrews and the East Neuk.



Contact Details

Email: hello@airdit.co.uk

Address: Near St Andrews

Website: airdit.co.uk



The Snug at Logie

Location: Great for the Fife Coastal Path

The Snug at Logie Farm offers two luxury glamping pods nestled on a hilltop in Fife, Scotland, providing breathtaking views of the River Tay. Each pod is equipped with a super-king-size bed, en-suite wetroom, underfloor heating, mood lighting, wireless charging, and a smart TV with Netflix. Guests can enjoy private decking with a hot tub, firepit, and BBQ area, ideal for a romantic getaway. The site is powered off-grid, emphasizing sustainability with eco-friendly amenities. The Snug offers a tranquil retreat amidst nature.



Contact Details

Email: info@logiefarmsnug.co.uk

Address: Newburgh, KY14 6HL

Website: logiefarmsnug.co.uk



Silverburn Park

Silverburn Park Campsite in Leven, Fife, offers a tranquil, eco-conscious retreat within a 27-acre park. Guests can choose from 12 grass tent pitches, 4 gravel campervan spots, all with electric hookups and 3 heated glamping eco-pods equipped with a fridge, microwave, and kettle. Facilities include accessible bathrooms, a communal fire pit, and the on-site Cottage Window Café. Just 400 metres from the Fife Coastal Path and near Leven Beach, it's ideal for nature lovers and dog owners seeking a peaceful coastal escape.



Contact Details

Email: camping@silverburnpark.co.uk
Address: Leven, KY8 5PU
Website: silverburnpark.co.uk/camping



Catch Penny Safari Lodges

Catchpenny Safari Lodges offers luxury off-grid glamping along Fife's scenic coastline between Elie and St Monans. Each of the eight safari-style lodges sleeps up to six guests and features real beds, a fully equipped kitchen, a log-burning stove, and a private bathroom with hot shower and flushing toilet. Powered by wind and solar energy, the lodges provide a sustainable yet comfortable stay. Guests can enjoy panoramic sea views, direct access to the Fife Coastal Path, and proximity to local attractions like Ardross Farm Shop and Elie's beaches. Dog-friendly and ideal for families, couples, and nature lovers seeking a digital detox.



Contact Details

Email: info@catchpennyelie.co.uk
Address: Elie, KY9 1JT
Website: clunyactivities.co.uk



The Boars Head

Location: North Fife, 15 Min from Cupar and 25 min from St Andrews

Located in the charming village of Auchtermuchty, The Boar's Head offers modern, comfortable en-suite rooms set above a historic coaching inn. Each room is thoughtfully furnished for a relaxed stay, ideal for couples, solo travellers, or small groups. Guests can enjoy hearty meals and a friendly atmosphere in the traditional pub downstairs, with easy access to scenic walking and cycling routes, historic sites, and the beautiful countryside of north Fife.



Contact Details

Email: info@theboarsheadfife.co.uk
Address: 23 High Street, Auchtermuchty, KY14 7AP
Website: theboarshead.co.uk



Contact Information

EMAIL ADDRESS

promoting.fife@fife.gov.uk

WEBSITE

www.welcometofife.com