



FIFE

DOORS OPEN DAYS 2025



Fife

welcometofife.com

6th/7th September • East Fife

13th/14th September • Central Fife

20th/21st September • West Fife

www.doorsopendays.org.uk

Fife
COUNCIL

Doors Open Days is a national event run by the Scottish Civic Trust. Information about the national programme, including event listings, can be found at www.doorsopendays.org.uk.

Doors Open Days, along with Scottish Archaeology Month, take place throughout Scotland in September and are part of European Heritage Days.

#dodscot

www.twitter.com/doorsopendays

www.facebook.com/dodscotland

www.instagram.com/doorsopendaysscotland

Fife Co-ordinator
Steve Liscoe
Fife Council,
Fife House,
Glenrothes, KY7 5LT

Tel 03451 555555

Admin.DoorsOpenDay@fife.gov.uk

Key



Children's activities / events



Refreshments available



Wheelchair accessible building



Limited wheelchair access



Limited mobility issues access



Toilet



Toilet adapted for the disabled



Hearing loop



Parking



HISTORIC
ENVIRONMENT
SCOTLAND

ÀRAINNEACHD
EACHDRAIDHEIL
ALBA



welcometofife.com

Fife Council is pleased to support, and to welcome you to, Doors Open Days Fife 2025. This year even more venues are taking part with lots of our regular venues reopening again for this year, as well as many new places to visit.

Why not have a great day out and visit a remote church, a restored 16thC doocot, Fife Museums' collections, enjoy an art exhibition, visit a lighthouse, browse a collection of Pictish carvings or ride on a steam locomotive; all of these are available over the DOD September weekends.

For further details visit the DOD website – www.doorsopendays.org.uk – or follow links to the venues' website to find out more. And remember to check the DOD website for new venues still being added. Please be aware that venues may be subject to closure at short notice, so before travelling check the latest details online.

And whilst you are visiting Fife have a look at some of the other excellent attractions on offer at “Welcome to Fife” for ideas and inspiration. You'll find places to go, things to do, accommodation listings, great places to eat and drink and much more by using the link and QR code.

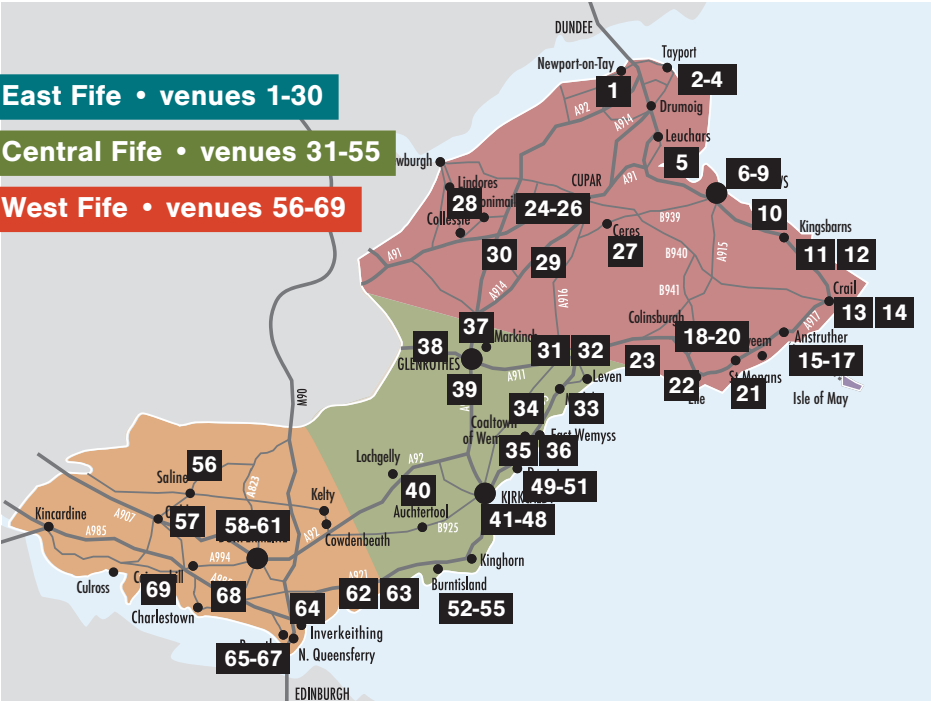
www.welcometofife.com



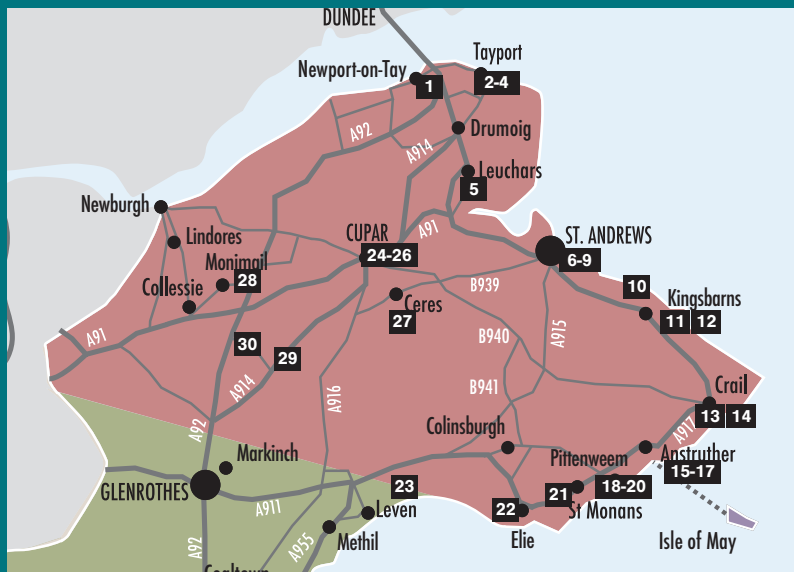
East Fife • venues 1-30

Central Fife • venues 31-55

West Fife • venues 56-69



EAST FIFE



- | | | | |
|----|-------------------------------------|----|----------------------------|
| 1 | St Mary's Episcopal Church | 17 | Murray Library Hostel |
| 2 | Our Lady Star of the Sea | 18 | Telephone Exchange |
| 3 | Auld Kirk, Tayport | 19 | St John the Evangelist |
| 4 | St Margaret of Scotland | 20 | Pittenweem Parish Church |
| 5 | St Athernase Church | 21 | St Monans Auld Kirk |
| 6 | St Andrews Burgh Chambers | 22 | Elie Parish Church |
| 7 | St Andrews Heritage Museum & Garden | 23 | Largo Parish Church |
| 8 | Bogward Dooct | 24 | 1940s House |
| 9 | Byre Theatre | 25 | County Buildings, Cupar |
| 10 | Boarhills Dooct | 26 | St James the Great, Cupar |
| 11 | Cambo Gardens | 27 | Fife Folk Museum |
| 12 | Kingsbarns Parish Church | 28 | Monimail Tower |
| 13 | Crail Parish Church | 29 | David Wilkie Memorial Hall |
| 14 | Crail Museum & Heritage Centre | 30 | St Mary's, Ladybank |
| 15 | Isle of May Lighthouses | | |
| 16 | Dreel Halls | | |

Newport on Tay**1 St Mary's Episcopal Church**

10 High Street, Newport on Tay DD6 8DA

 **1230 - 1630 7th Sept**



The church is a Grade B listed building and was built in 1886-87 by the architect Thomas Martin Cappon, of Dundee.

It has a fine organ, built by John Robertson Miller of Dundee, in 1903/04. Several beautiful stained glass windows, two by the Charles Eamer Kempe studio (London), enhance the building; the oldest window dates from 1887, and the "newest" west window was designed in 1950 by Alexander Russell, of Dundee Art College

stmaryschurchnewportontay.org

We are currently installing a lift which is hoped to be operational. On street parking only

**Tayport****2 Our Lady Star of the Sea**

Queen Street, Tayport DD6 9LQ

 **1400 - 1600 7th Sept**



Our Lady, Star of the Sea RC Church was designed by Reginald Fairlie. The sculpture of Our Lady above the entrance inscribed Stella Maris (Star of the Sea) was by Huw Lorimer. Mary is standing in a simple rowing boat holding the infant Jesus. The exterior of the church has recently been freshened up and on approach to Tayport from St Michaels its attractive exterior and position are a feast to the eye. The dominant architectural style is Scottish Gothic.

www.dunkelddiocese.co.uk

Some areas of the church have raised steps



Tayport

3 Auld Kirk, Tayport

Auld Kirk, Castle Street, Tayport DD6 9BY

🕒 1100 - 1600 7th Sept



A religious site since 1607, the present Auld Kirk dates from 1794. It is one of the oldest buildings in Tayport and an important landmark. The Auld Kirk is developing as an Arts, Music and Heritage Centre, whilst retaining the building's historic features, such as the impressive John Miller organ which was installed in 1899. The surrounding graveyard has many interesting slabs reflecting Tayport's maritime history. Display of maps, photographs and film footage of Tayport's history, including the Millennium carol concert in the Auld Kirk.

www.tayportauldkirk.org.uk

2.00 pm Guided tour of Auld Kirk graveyard by Dr Iain Flett. 3.00 pm Tour and talk about the Auld Kirk's history by Simon King-Spooner There are access ramps but the path through the graveyard is not very wheel chair friendly. Street parking is available



Tayport

4 St Margaret of Scotland

Queen Street, Tayport DD6 9JZ

🕒 1400 - 1600 7th Sept



St Margaret's is a picturesque building of buttressed red brick, designed in late Victorian Gothic style by Dundee architect Thomas Martin Cappon in 1896. Its vaulted interior features extensive use of timber and intricate window tracery. A late 19th century Estey reed organ is still in regular use. The font was made by local draftsman Gilbert Atkinson, who also made two crosses from historic timber. There are several interesting memorials, including a Pascal Candle stand, made by John (Jacky) Cooper, and another to six altar boys who lost their lives in active service in the Second World War.

www.stmargarettayport.org

Church service 9.30 am – all welcome!



Leuchars**5 St Athernase Church**

School Road, Leuchars KY16 0HD

 **1330 - 1600 6/7th Sept**

The chancel and apse of the church are arguably the best surviving 12thC Romanesque buildings in Scotland. The nave and bell tower were added in 17th and 18thC but modern works restored much of the Norman exterior arcading. Recent work saw conservation of the exterior corbel course of human, animal and grotesque carvings. The church's interior holds an example of an Albannach cross slab from the 9thC that was found nearby. You can see the history of the many changes in the building written in its fabric, and find out what our plans are for the future.

leucharsandtayportchurch.co.uk/

Tours are available on an ad hoc basis, and teas and home baking will be available along with a small craft stall. There are a few low steps within the church

**St Andrews****6 St Andrews Burgh Chambers**

Queens Gardens, St Andrews KY16 9TA

 **1000 -1400 6th Sept**

The Burgh Chambers in St Andrews is Fife Council owned and Fife Council run. This facility can be booked by the public and by community groups for various activities. This facility has been recently refurbished and is a fantastic venue for small weddings.

[Street parking](#)



St Andrews

7 St Andrews Heritage Museum & Garden

12 North Street, St Andrews

 1030 - 1630 7th Sept



Re-opening after 18 months of restoration and major redevelopment, St Andrews Heritage Museum & Garden is located within a 17th century former fisher home in the historic east end of St Andrews. This independent museum tells the stories of local people and the growth of St Andrews into the town it is today, with displays of local art, photography, and social history artefacts. A new exhibition space within the grounds of the museum garden hosts changing exhibitions throughout the year.

www.standrewsmuseum.com

Curator's Tour: Heritage in the Making, 1100 – 1230, booking required.

The ground floor, garden, outhouses and gallery space are fully accessible. Street parking.

Tour booking required via www.doorsopendays.org.uk

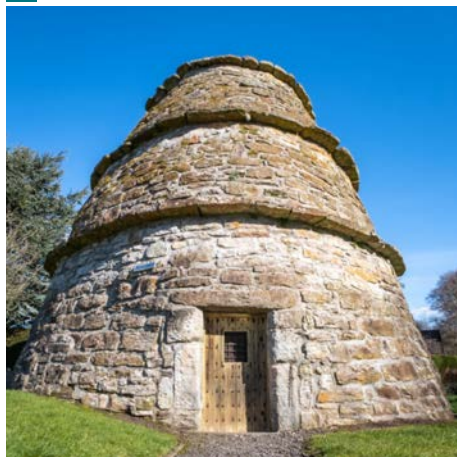


St Andrews

8 Bogward Doocot

44 Doocot Road, St Andrews KY16 8QP

 1200 - 1600 7th Sept



The Bogward Doocot is a sixteenth century building of the 'bee-hive' type, so called because the circular shape resembled the bee-skeps or hives of the time. As recently as the 1960s it was part of the Bogward Farm and no modern houses then straddled the Lade Braes walk. Join us on Sunday 7th September to find out more about our preservation goals, events and membership, and for an interesting peek inside the Doocot. The doocot is about a mile out of central St Andrews, and can be reached on foot via the Lade Braes walk or by car via the Canongate or Hepburn Gardens, and then turning into Bogward and then Doocot Road.

www.standrewspreservationtrust.com

No booking required. More info Trust@stapt.org.uk 01334 477629



St Andrews

9 Byre Theatre

Byre Theatre, Abbey Street, St Andrews
KY16 9LA

 1100 - 1700 6th Sept



Join us at the award-winning Byre Theatre building, for tours, talks and displays. The current building, the third Byre Theatre on the same site, was designed by award-winning architects Nicoll Russell Studios of Broughty Ferry and was opened in 2001 by the late Sir Sean Connery. The Byre has been part of the University of St Andrews since 2014 and hosts around 800 events every year, with a programme which integrates professional performances with community and student work, while serving the community engagement, teaching and research interests of the University. For further information about events on the day please check byretheatre.com

byretheatre.com

The Byre does not have dedicated parking, although there are 4 designated blue badge parking spaces outside our entrances. Find full information at byretheatre.com/your-visit/accessibility/ The day features tours, talks and displays with more details available at byretheatre.com nearer the time.



Boarhills

10 Boarhills Doocot

Boarhills KY16 8PP

 1400 - 1700 6/7th Sept



Boarhills Doocot is a lectern style doocot dating to the 17th century. It was acquired, with a grant from the Scottish Land Fund, by Boarhills and Dunino Community Trust in 2018 for a project to create a village green space. The doocot was ruinous, and after more fund raising, work on its restoration in started 2022 and was completed in 2023. Financial assistance came from Fife Environment Trust, St Andrews Community Trust and St Andrews Heritage Trust. The doocot is now fully restored and an eye-catching feature on the Fife Coastal Path.

boarhillsandduninocommunitytrust.org

Guided tour of doocot and exhibition on the history of doocots in this area. Adjacent community green space is ideal picnic spot with lovely views. Come and relax! Or why not have a walk along part of the coastal path or around Boarhills, accessible from this point. Refreshments available at the doocot, and WC at the village hall



Kingsbarns

11 Cambo Gardens

Cambo Heritage Trust , The Stables
Visitor Centre, Cambo Estate,
Kingsbarns KY16 8QD

 1100 - 1500 6/7th Sept



Explore the designed landscape of Cambo starting at the Cambo Doocot. Discover the role this once functioning Doocot had to play in Cambo's Estate and the importance of these buildings throughout Fife.

Heritage talks will be given at the doocot throughout the day



Kingsbarns

12 Kingsbarns Parish Church

The Square, Kingsbarns KY16 8SS

 1400 - 1600 7th Sept



This much loved village church has been a place of worship since 1631. It has been well looked after and treasured by the congregation and local community over the years, and though it has seen many transformations, they have left its atmosphere of peace and tranquillity undisturbed. It is home to an especially fine pipe organ (Forster and Andrews 1882) and a Bechstein grand piano, both of which can be enjoyed by Doors Open Day visitors.

Come and go as you please during opening time. Explore our exhibits, listen to organ and piano recitals, have a go at the Churchyard Quiz There is a children's Quiz too! Refreshments will be served



Crail**13 Crail Parish Church**

Marketgate North, Crail KY10 3TH

 **1300 - 1600 6/7th Sept**


Crail Parish Church has its origins in the second half of the twelfth century. In the early thirteenth century a tower was added to the west end of the building and the nave was re-built with arcades of six gothic arches, opening to north and south aisles and a new arch opening to the chancel. Major alterations occurred in 1815, followed by an extensive work of restoration in 1963. The present layout of the church dates from this period.

www.crailchurch.com

Tours of the interior of the church, displays of church artefacts and organ recitals Street parking

**Crail****14 Crail Museum & Heritage Centre**

62 – 64 Marketgate South, Crail

 **Saturdays 1100 – 1600**
Sundays 1330 – 1600
5/6th, 14/15th and 20/21st Sept


Crail Museum & Heritage Centre provides an insight into the past life of this ancient Royal Burgh, its kirk, seafaring tradition, and the history of the nearby airfield from the First World War until its closure in 1960. Our exhibitions change regularly, and this year's new exhibition is entitled "Volunteering in Crail". Crail has been prosperous since the 12th century, and its picturesque harbour is a frequent image in Scottish calendars and guides.

www.crailmuseum.uk

Guided tours around Crail on all weekends. On street parking only



Anstruther

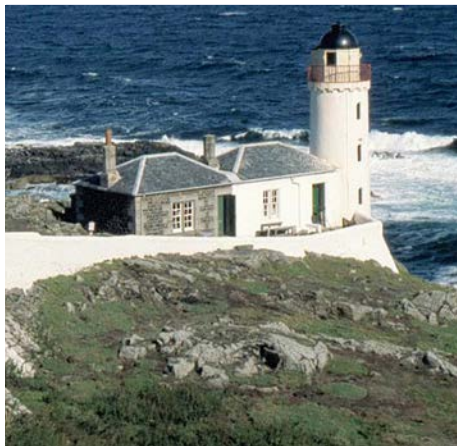
15 Isle of May Lighthouses

via Middle Pier, Anstruther Harbour
KY10 3AB



6/7th Sept

**Check ferry website
for sailing times**



Staff from NatureScot Heritage will be on hand to show you the full range of the island's unique facilities. Discover how, besides its deep religious heritage and its marine wildlife, the Isle of May is unique in spanning the whole history of light houses around Scotland.

Open access to buildings normally under lock and key! These include Scotland oldest lighthouse built in 1636 (the beacon lighthouse), also the main Stevenson lighthouse with access to the very top. We'll also open the Low lighthouse and the engine rooms.

NOTE: The Ferry is not part of the free element of Doors Open Day

isleofmaynnr.wordpress.com/

Bookings for the ferry to the island must be made via the Isle Of May Ferry website - www.isleofmayferry.com



Anstruther

16 Dreel Halls

High Street West, Anstruther KY10 3DJ



**1100 – 1700 (last entry 16.30)
7th Sept**



Take a tour of the 16thC St Nicholas tower and, weather permitting, step out onto the parapet for stunning views over Anstruther and out to the Isle of May. Explore the adjacent graveyard with fascinating gravestones, and the stone coffin in which it's said St Ethernan (Adrian) floated across the sea. Hear about the current and planned works of Anstruther Improvements Association who own the building and operate it for the community. The Dreel Halls comprises community and events spaces in a historic complex of buildings including an 18thC tolbooth and 19thC church nave.

www.dreelhalls.org

Tours of the tower with access, via a spiral stair, to the parapet (weather dependent) will depart the Lower Hall regularly in small groups. Children are welcome on the tower tours but must be accompanied and remain the responsibility of an adult. Home baking by donation



Anstruther**17 Murray Library Hostel**

7 Shore Street, Anstruther KY10 3EA

 **1300 - 1600 7th Sept**

Built in 1908 following a bequest from Anstruther-born David Murray, the Murray Library provided a library and reading rooms for over 100 years. Following a £1 million renovation completed in 2016, the building was repurposed into a hostel retaining many of the features of this early 20th century gem while providing affordable accommodation to visitors in the East Neuk. The building is managed by the Murray Library Trust who continue to champion the educational and leisure pursuits of Anstruther through regular grants awarded within the local community.

Visitors should be mindful that the hostel will be operational on the 7th so there may be parts of the building that will be closed for viewing. The building is not fully wheelchair accessible

**Pittenweem****18 Telephone Exchange**

Session Lane, Pittenweem KY10 2QS

 **1000 - 1500 7th Sept**

This diminutive building once housed Pittenweem's Unit Automatic Exchange (UAX) 13 which the GPO opened in the early 1950s. British Telecom closed it down on 27th February 1980 and in 2021, after many years being used for storage, the building was converted into a dwelling house to preserve its place in the history of Pittenweem's built heritage. The open day will include a small display about the telephone technology it once supported.

Session Lane is privately owned and has no parking facilities – please do not drive up it. On-street parking is available close by. There is step-free access into the building but the lane has an uneven surface.



Pittenweem

19 St John the Evangelist

St John the Evangelist, Marygate,
Pittenweem KY10 2LH

🕒 1000 - 1700 6/7th Sept



Explore this 19thC Episcopal church and enjoy the Victorian and Arts & Crafts stained glass. Admire the wood carvings in the east chancel by renowned architect Robert Lorimer. Then pick up our self-guide leaflet to go outside to our 'Quiet Garden' which is an ideal place to contemplate and enjoy the peace and tranquillity of this beautiful location. During our Doors Open Days, you may explore to get a close-up view of the gatehouse and precinct buildings of Pittenweem's 15thC Augustinian Priory.

You may also like to visit St Fillan's Cave in nearby Cove Wynd. Though not a Doors Open venue keys can be obtained at the "Cocoa Tree" Cafe in the High Street. The cave floor is uneven and may be slippery, caution required.

www.eastneuk-episcopal.co.uk

On Sunday, 7th September, Holy Communion is celebrated - 11:30 - 12:45 - all welcome. On street parking only.



Pittenweem

20 Pittenweem Parish Church

High Street, Pittenweem KY10 2LA

🕒 1000 – 1600 6th Sept
1300 – 1600 7th Sept



A religious site since 1589, Pittenweem Parish Church is at the heart of the Royal Burgh and continues to provide a place of worship to both residents and visitors. With the adjoining Tolbooth Tower, the church once formed part of a priory. The building houses five windows by William Wilson RSA (1905 – 1972), the foremost artist in stained glass in post-war Scotland, including one that reflects the relationship between Pittenweem and the sea. With the church due to close in 2027, Doors Open Days will be one of the final opportunities for the public to visit this historic building.

The building is not fully wheelchair accessible.



St Monans**21 St Monans Auld Kirk**

Burnside, St Monans KY10 2BX

 **1000 - 1700 7th Sept**

The Auld Kirk dates from the mid 14thC and was founded by King David II. It has been in almost constant use since then, though notably it briefly served as stables for Cromwell's horses! Now the Kirk is facing a future outwith the ownership of Church of Scotland. St Monans Auld Kirk Enterprise (SMAKE) want to develop the building as a community asset and plans to refurbish it for future use. Come along to enjoy a cuppa in this fantastic, unique sacred space and learn more about SMAKE's work so far and see plans for the next phase in the Kirk's long history.

stmonansauldkirk.com**Elie****22 Elie Parish Church**

Kirkpark Road KY9 1DG

 **1100 - 1500 6th Sept**

Elie Parish Church is a B listed building in the centre of Elie. It was constructed in 1639 as a T plan during the post reformation period. Opposite the pulpit is the lairds loft with a family vault beneath. The clocktower was not part of the original church and was built in 1726 by Sir John Anstruther. The church has a number of high quality stained glass windows, including two which were designed by renowned artist Edward Burne-Jones who worked in the William Morris Arts and Crafts studio. The church is surrounded by a historic graveyard, including Commonwealth War Graves.

e-voice.org.uk/ekcel/

Volunteers on hand to discuss the history of the building and stained glass windows and plans for the future use of the church.



Upper Largo

23 Largo Parish Church

Church Place, Upper Largo KY8 6EH

 1400 - 1600 7th Sept



Largo Parish Church has been on the current site for well over 1000 years. The current building dates from the 1620's with major additions of transepts in 1816-17. Further restoration in 1894 included the installation of striking stained glass windows. Numerous memorials decorate the walls- a living church with a long heritage.

www.largochurches.org.uk/

A Steward will be present to answer questions and provide copies of the Church history booklet, (£3 donation requested). There are a few low steps within the church.



Cupar

24 1940s House

Address provided upon booking

 0900 - 1600 5/6th Sept



Built in 1936 as a comfortable modern home in central Cupar, this private dwelling house has survived with limited modernisation. It is sympathetically decorated and fitted out with furniture, furnishings and appliances of the era; a living time-capsule of the sights, sounds and smells of a 1940s home. Pre-booked one-hour tours in small groups, conducted by the owners, with demonstration of "modern technology" for a fully-immersive experience.

On-street parking outside the property.

Tour booking required via
www.doorsopendays.org.uk



Cupar**25 County Buildings, Cupar**

Cupar County Buildings, St Catherine Street, Cupar KY15 4TA

 **1000 - 1500 7th Sept**




Cupar County Buildings is an example of civic architecture combining the functions of council chamber and courthouse. The principal building of 1810-1817 is the neo-classical work of James Gillespie Graham. His style is mirrored in the design of the 1924-5 addition to the east. The building is well-detailed externally with a large Diocletian window, pilasters, moulded architraves and a balustraded parapet. The Roman-Doric columned door piece provides an imposing entrance. The whole makes an impressive building that contributes to an architecturally rich built heritage in the town of Cupar.

www.fife.gov.uk

**Cupar****26 St James the Great, Cupar**

St Catherine Street, Cupar KY15 4HH

 **1100 - 1600 6th Sept**
1230 - 1530 7th Sept



St James the Great, Episcopal church was formally opened December 1867 by Bishop Wordsworth. Built to a design by architect R. Anderson the work was carried out by Mr R. Adam, Cupar Fife. The notable panelling and choir screen were the gift of the Gilroy family, as a memorial to sons lost during the 1914-1918 war. It is believed that they were designed by architect Prof. Lorimer and were carved by the same brothers who restored the woodwork of Dumfermline Abbey.

leucharsandtayportchurch.co.uk/



Ceres

27 Fife Folk Museum

High Street, Ceres KY15 5NF

 1030 - 1700 7th Sept



Fife Folk Museum first opened its doors in 1968, having been created out of historic weavers' cottages and the 17th Century Weigh House. With over 10,000 objects, artefacts and photographs, this small independent museum offers a unique insight into Fife's rich domestic, industrial and agricultural past. A bookable tour will give an insight into how we accession and store our artefacts and to the work that goes on behind the scenes.

www.fifefolkmuseum.org

There are a few steps within the museum.

Tour booking required via
www.doorsopendays.org.uk



Monimail

28 Monimail Tower

Monimail Tower, Monimail KY15 7RJ

 1000 - 1600 7th Sept



Monimail Tower Project is a small charity taking care of a beautiful walled garden and orchard set around a medieval tower in sunny Fife. The tower is dated 13th century - a former residence of the Archbishops of St Andrews. The tower comprises three storeys over a basement, which was later altered to form an ice house. There is a small exhibition in the tower about its history and after visiting the tower you can take a walk in the walled orchard, garden and woods and see a range of ancient trees.

monimailtower.org/

Visitors are welcome to visit the tower and explore the walled gardens, the orchard and the woods. These are self-guided activities but Monimail Project members will be available to answer questions.



Pitlessie**29 David Wilkie Memorial Hall**

Ladybank Road, Pitlessie KY15 7SP

 **1000 -1400 7th Sept**

The Sir David Wilkie Memorial Hall is Fife Council owned and Fife Council run. This facility can be booked by the public and by community groups for various activities. This venue was built in 1897 to commemorate the famous painter Sir David Wilkie. It is home to various paintings by Sir David Wilkie. Outside the venue sits a memorial for those who fell during the 1st and 2nd World Wars.

Street parking

**Ladybank****30 St Mary's, Ladybank**

Monkstown, Ladybank KY15 7JX

 **1100 – 1400 6th Sept**
1230 – 1430 7th Sept

St Mary's is the last remaining 'cottage' Scottish Episcopal church. The church was originally the last of a row of cottages built in 1810 to house the workers of a nearby factory. By 1896 the cottage belonged to Andrew Young and he rented it to St James the Great in Cupar. In the 20thC the cottage was converted to a church, though it was not named St Mary's until 1951. The altar, and pews came from St Columba's in Kirkcaldy when it was closed in 1946. The Church has a private garden to the rear is also popular for parish coffee mornings and celebrations.

www.stjamesandstmarys.org.uk/welcome.htm



CENTRAL FIFE



- | | |
|---|---|
| 31 Fife Heritage Railway | 44 Town House, Kirkcaldy |
| 32 Silverburn Park | 45 Greener Kirkcaldy Community Training Garden |
| 33 Methil Heritage Centre | 46 Kirkcaldy Community Gardens & Allotments (Ravenscraig) |
| 34 Wemyss Caves | 47 Pathhead Parish Church |
| 35 Wemyss School of Needlework | 48 Kirkcaldy Old Kirk & Graveyard |
| 36 Art Catriona Gallery | 49 Kirkcaldy Art Club |
| 37 St Drostan's Kirk | 50 Dysart Tolbooth and Town House |
| 38 Common Good Land, Christ Kirk on the Green | 51 Dysart St Clair Parish Church |
| 39 Fife Collections Centre, Bankhead Central | 52 Burntisland Parish Church |
| 40 Auchtertool Kirk | 53 Museum of Communication |
| 41 Adam Smith Theatre | 54 Erskine United Free Church Burntisland |
| 42 Adam Smith Heritage Centre | 55 Burntisland Heritage Centre & Burgh Chambers |
| 43 Law's Close aka The Merchant's House | |

Leven

31 Fife Heritage Railway

Kirkland Yard, Leven KY8 4RB

 **1100 - 1600 13/14th Sept**

Fife Heritage Railway is home to steam, diesel and electric rolling stock and its volunteers work hard to maintain these to provide fun days out to members of the public each year. Our Doors Open Days will give visitors the chance to go behind the scenes to see how challenging it is to run the FHR, and to learn about our history and the future for the railway. There is a FREE shuttle bus in operation from Kirkcaldy/Methilhill/Leven to make reaching the event easier. The volunteers at the FHR look forward to welcoming you to this event.

www.fifeheritagerailway.co.uk/

This event will offer visitors a chance to see behind the scenes at Kirkland Yard. Guided tours of our main shed and restoration shed will be on offer frequently during the day. These tours will kick off from in front of our tearoom building which is located beside the ticket office. Some of our grounds are rough and bumpy which may not be suitable for wheelchair users.



Leven

CANCELLED**32 Silverburn Park**

Largo Rd, Lundin Links, Leven KY8 5PU

 **Open All Day 13/14th Sept**

Silverburn Flax Mill is undergoing a multi-million pound redevelopment to turn the derelict B-listed building into a café, hostel and event space. Join a hard hat tour or talk for an exclusive look at the latest Flax Mill developments. Learn about traditional crafts and building techniques in our drop in workshops. Enjoy a guided walk of the Park, with stunning trees from across the world, or explore how flax becomes linen in our workshops.

www.silverburnpark.co.uk

The Cottage Window Café will be open 10am – 4pm. Online photography exhibition. The park is mobility friendly but unfortunately the mill building is currently unsuited for wheelchair access



Methil

33 Methil Heritage Centre

272 High Street, Methil KY8 3EQ

 1300 - 1600 6th Sept



Methil Heritage Centre is situated in the old Edward VIII Post Office on what was once the bustling high street. Inside the red sandstone building is our permanent exhibition "Levenmouth Lives" which captures the history of Methil and surrounding area, from prehistoric times to the present day. The Centre maintains an extensive archive, in collaboration with the volunteer group Friends of Methil Heritage, which will be available for enquiries and research, and there will be an activity table for the youngsters with colouring sheets, puzzles and games. Also, perfect time to have a cuppa and a chat about the local area.

www.onfife.com/venues/methil-heritage-centre/

Street Parking



East Wemyss

34 Wemyss Caves

Terras Hall, The Haugh, East Wemyss KY1 4SB

 1330 - 1700 14th Sept



Come and see the largest collection of Pictish carvings anywhere - still in the place they were made over 1,500 years ago. Located on a dramatic stretch of Fife coastline overlooking the Firth of Forth, the Wemyss Caves are home to over 50 inscribed symbols, animal figures and a depiction of an early medieval boat. The caves also house several crosses carved by the first Christian missionaries to visit the area and on the cliffs above sit the remains of medieval Macduff Castle, once home to the Earls of Fife.

Guided tour and open day at the museum. Tours at 2pm and 2:30pm must be prebooked. Street Parking The Museum and two caves are wheelchair accessible. However, the coastal path does have some uneven ground



Coaltown of Wemyss**35 Wemyss School of Needlework**

Main Street, Coaltown of Wemyss
KY1 4NX

 1000 - 1600 6/7th & 13/14th Sept



The School has been in existence since 1876, when girls came to learn a skill and earn money. Under the present guardian, Fiona Wemyss, The School has progressed to teaching all kinds of Needlecrafts, supplying materials and designs to customers while still retaining the original building and wealth of historical pieces.

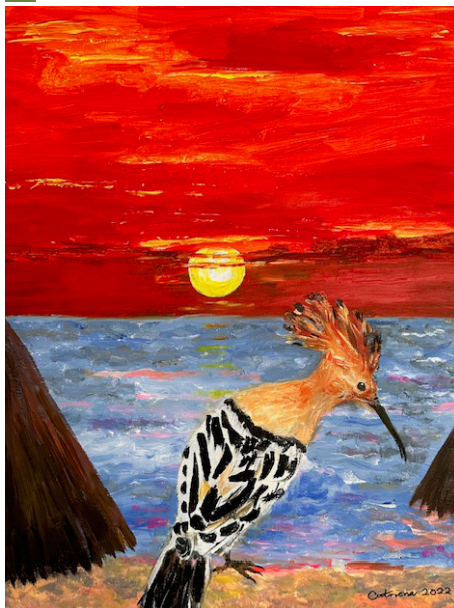
www.wemyssneedlework.co.uk

There will be a Museum and History talk about the School.

**Coaltown of Wemyss****36 Art Catriona Gallery**

Lilybank Cottage, 82 Main Street,
Coaltown of Wemyss KY1 4NS

 1200 - 1500 13th Sept



Fife Artist, Catriona Livingstone, known as Art Catriona, paints in an original, vibrant, modern, and uplifting style using acrylics on canvas. For a Central Fife Doors Open Day special event her personal gallery will be open for public viewing where her canvases, framed prints, cushions and mugs will be on show and available to purchase at affordable prices. Families are welcome. Catriona trained in Edinburgh and also leads the Wemyss Artists and Artisans group.

artcatriona.com/

Possible restrictions for wider wheelchairs



Markinch

37 St Drostan's Kirk

Kirk Brae, Markinch KY7 6DS

 1000 - 1630 13/14th Sept



St Drostan's has one of the best preserved early Norman towers in Scotland, and also one of the oldest, built by Earl Constantine in the 1120s and completed by his successor Gillemichael in the 1130s. Their grandsons granted the church to the newly formed Priory of St Andrews between 1165 and 1170. The east and west gables are still preserved but the north and south walls have been reconstructed to accommodate a growing population. Recently a large arch was discovered, hidden by later building works. The original appearance of the arch is now represented by a wonderful new mural by artist Donna Forrester.

www.markinchheritage.org.uk

Tours on request but groups should book ahead.



Leslie

38 Common Good Land, Christ Kirk on the Green

The Green, Leslie KY6 3DF

 1000 onwards, 11th - 15th Sept



An archaeological excavation will take place on the historic Green from 11th to 15th September. Leslie is thought to have developed as an agricultural township that serviced the Royal estate of Fettykil established by King Malcolm IV no later than 1178. Historians suggest this settlement was close to a church that existed on or around the present Site from at least the 10th century, indicating the name Fettykil is derived from Gaelic cll meaning 'Wooden Kirk'. It is one of eleven Fife place-names that contains this Gaelic name which form a cluster centred in East Fife, the only area of Scotland South of Inverness to contain such a name.

www.leslieheritage.org.uk

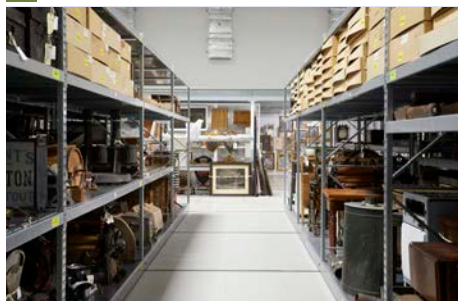
Refreshments served at the Leslie Town Hall



Glenrothes**39 Fife Collections Centre,
Bankhead Central**

Bankhead Central, Bankhead Park,
Glenrothes KY7 6GH

 **1030 & 1400 13th Sept**



Behind the scenes guided tour of Fife Collections Centre at 10.30am and at 2pm on Saturday 13th September. The Collections Centre is home to over 250,000 objects and documents from the Museums and Archives Collection. The tour is suitable for people aged 14 years and upwards.

www.onfife.com/venues/fife-collections-centre

Tour spaces will be limited so pre-booking is essential.

**Auchtertool****40 Auchtertool Kirk**

Auchtertool Kirk, 1 mile west of Auchtertool, signposted off the B925
KY2 5XG

 **1330 - 1600 14th Sept**



The Kirk invites you to enjoy this peaceful setting. Read "The Beadle's Daughter" poetry stone. Inside, see the beautiful stained glass windows, one of which is a war memorial. There is an avenue of honour with a tree for each name on the memorial. There is also a Casson & Miller pipe organ. There will be a childrens' quiz available

auchtertoolkirk.org.uk/

NB Parking is at KY2 5XQ – Fife Council car park. Entry to the graveyard only for disabled drivers, or to drop off passengers with mobility problems at the door. Unfortunately the church is no longer wheelchair accessible



Kirkcaldy

41 Adam Smith Theatre

Bennoch Road, Kirkcaldy KY1 1ET



1000 - 1700 6th Sept



Step inside the beautifully restored Adam Smith Theatre, a Kirkcaldy landmark since 1899. Reopened in 2023 after a multi-million-pound investment, the building blends historic charm with exciting new spaces like the Design Suite, a creative hub for makers, artists and innovators. From original stonework to state-of-the-art facilities, it's a place where heritage and imagination meet. Come explore behind the scenes of this much-loved cultural venue and see how the past has shaped a space for the future.

www.onfife.com/venues/adam-smith-theatre/

Guided tours of the Theatre will be every 45 minutes from 10am – 5pm. Tours in the Design Suite are from 10am – 5pm. Limited wheelchair access backstage



Kirkcaldy

42 Adam Smith Heritage Centre

1 Adam Smith Close, Kirkcaldy KY1 1HL



1100 - 1500 13/14th Sept



As part of Kirkcaldy's Adam Smith Birthplace Initiative, this is an opportunity to see Adam Smith Global Foundation's exhibition of his life and times, highlighting the global importance of Smith, an 18th century moral philosopher and political economist, both then and since. Listen to our ambitious plans to further develop our activities, locally, nationally and internationally. The Adam Smith Garden, where he would have spent many hours in contemplation of philosophical and political economic issues, will also be open for perusal and use as a quiet space.

www.adamsmithglobalfoundation.com

The garden is accessible but uneven. Ground floor is wheelchair accessible but there are only stairs to the upper floor.



Kirkcaldy**43 Law's Close aka The Merchant's House**

Laws Close, 339-343 High Street,
Kirkcaldy KY1 1JL

 **1100 - 1500 14th Sept**



Law's Close (locally known as 'The Merchant's House') is one of the finest surviving 16th Century Town Houses in Scotland. When purchased by SHBT in 1986, Law's Close had no prior history of restoration. This resulted in a series of major discoveries throughout the twenty year project, each of which added to the building's overall importance.

Parking is available close by, and the Merchant's Garden, with outdoor seating, will be open as well as the Merchant's House café and the Home of Hopcroft shop. Due to the age and nature of the building, it is not easy to navigate with limited mobility and it is unfortunately not wheelchair accessible. Seating is available throughout the building.

**Kirkcaldy****44 Town House, Kirkcaldy**

Town House, 2 Wemyssfield, Kirkcaldy
KY1 1XW

 **1000 - 1500 13th Sept**



Kirkcaldy Town House was designed with a Scandinavian theme by architects David Carr and William Howard of Edinburgh and building commenced in 1937. Construction was put on hold when the Second World War broke out, with work not resuming until 1950, and finally completed by the end of the 50's. Alongside it are six provost's lamps from the former Royal Burghs within the district. They all formerly stood outside the houses of senior Councillors but were brought to Townhouse when the royal burghs were abolished in 1975

www.fife.gov.uk

Short guided tours will take place at half hourly intervals throughout the day



Kirkcaldy**45 Greener Kirkcaldy Community Training Garden**

Ravenscraig Walled Garden, Dysart Road, Kirkcaldy KY1 2TA

 **1000 - 1600 14th Sept**



Greener Kirkcaldy's Nature and Growing team will be on hand to give you a tour of the Community Training Garden and tours will be offered throughout the day. Learn about our projects, and what we grow, and walk through our orchard.

www.greenerkirkcaldy.org.uk

There is an indoor space and sheltered awning with seating at our onsite cabin. Our location is outdoors and is accessible – our orchard may be difficult to access for those with limited mobility as there is uneven ground and a slope.

**Kirkcaldy****46 Kirkcaldy Community Gardens & Allotments (Ravenscraig)**

Ravenscraig Community Gardens and Allotments, Dysart Road, Kirkcaldy KY1 2TA

 **1000 - 1500 14th Sept**



Visit our newly renovated buildings, allotments and wildlife areas for our Community Garden Allotment site's 14th year. It is also managed for local user groups including: Nursery, Primary and Secondary pupils, disabled adults and volunteers. It incorporates the local green-space improvement group; Growing Kirkcaldy and part of Greener Kirkcaldy. We have extensive planted flower beds which provide food stations for bees, butterflies and other insects, as well as feeding stations and nest boxes to support birds. Paths will take visitors around and through the garden and allotments.

kirkcaldyallotments.wordpress.com/

Tours will be offered on request but will not be set to a particular schedule.
Street Parking



Kirkcaldy**47 Pathhead Parish Church**

Church Street, Kirkcaldy KY1 2AA

 **1400 - 1630 13/14th Sept**


The foundation of Pathhead Parish Church was laid in 1822 and the church dedicated for worship in November 1823. With a varied and interesting history over the intervening years, including unions and splits with other churches, a fire and lots of ministers, our building is worth a visit to learn about this history from our displays, and to see what we do for the local community today. There are lots of special features of interest throughout the church and information will be provided to help you enjoy your tour. There will also be photographs, a children's activity and live organ music. There will also be a children's activity, live organ music and refreshments available."

pathheadparishchurch.co.uk

Self-guided tour of the church and our exhibition highlighting its history. There are some small steps in the chancel, and parking is on the street.

**Kirkcaldy****48 Kirkcaldy Old Kirk & Graveyard**

Kirk Wynd, Kirkcaldy KY1 1EH

 **1000 - 1600 12/13th Sept**
1300 - 1600 14th Sept

In the oldest building still used in Kirkcaldy, see the beautiful stained glass by famous artists, browse exhibitions on its history. Climb the 15thC tower with one of our guides for panoramic views, and ring the bell, first cast in 1553. Less mobile? –view it on our screen or wander through the Kirk in our digital world of 1500. Tour the graveyard to hear "Stories from Stones" about the famous and not-so-famous people buried there – e.g. the two duellists of the last fatal duel in Scotland, the butler who became Provost because of a whale! Teas and coffee will be available for a small donation. Activities for children.

www.kirkcaldyoldkirktrust.org.uk

Tour the Old Kirk via our 360 degree camera views on our webpage. Graveyard tours at 1100 & 1400. Prebooked tower tours every hour There are comfortable seats throughout but the tower is not wheelchair accessible.



Dysart

49 Kirkcaldy Art Club

Hot Pot Wynd, Dysart KY1 2TQ

🕒 1100 - 1600 14th Sept



Visit our historic building on the corner of Hot Pot Wynd in Dysart as part of Doors Open 2025 on Sunday 14th September. We will have an exhibition of members work, tombola and children's activities in our pottery. The Art Club now houses a popular pottery downstairs and a light and airy painting studio above which can be accessed by chairlift if necessary. This year the club will once again be exhibiting members' work in the upstairs studio space including pottery, paintings and various crafts and kids can take part in activities in the Pottery Studio. Light refreshments will be on offer throughout the day.

www.kirkcaldyartclub.com

Club premises open to the public with children's art activities. We will talk about the club and the buildings history. There will be tea, coffee and home baking available as well as members work for sale. There is a stairlift to the upper floor



Dysart

50 Dysart Tolbooth and Town House

50 High Street, Dysart KY1 2UG

🕒 1200 - 1600 14th Sept



Dysart Tolbooth is a Category A listed building dating from 1576. The adjoining Town House is a Victorian extension which contains the former Town Council chambers and now houses the permanent exhibition of Dysart Trust. The exhibition contains a wide range of items from Dysart's industrial past and reflects the social and economic heritage of the local area. There are many old school class photographs which have always proven to be of great interest to visitors and the memorabilia relating to bygone Dysart is particularly evocative.

www.dysart-trust.org.uk

Volunteers will be present on the day to offer explanations and information to visitors. The venue is located up a steep flight of stairs and access to parts of the Exhibition is limited. There is seating inside.



Dysart

51 Dysart St Clair Parish Church

1-4 West Port, Dysart KY1 2TD

 1200 - 1600 14th Sept



There is only one example of Charles Rennie MacIntosh's work on the east coast of Scotland and it can be seen in Dysart St Clair Church of Scotland. The murals will be on show from 12 noon, after the morning service.

www.dysartstclair.org.uk



Burntisland

52 Burntisland Parish Church

East Leven Street, Burntisland KY3 9DX

 1400 - 1600 13/14th Sept



This notable church dates from 1592 -95 and was one of the first built after the Reformation. It is square in design and unique in Scotland. In 1601, due to plague in Edinburgh, King James VI held the general Assembly within its walls, and during that meeting granted an easier English translation of the Bible, which was printed in 1611 known as the 'King James Authorized Version'

burntislandandkinghornchurch.co.uk/



Burntisland

53 Museum of Communication

131 High Street, Burntisland KY3 9AA

 1100 - 1600 Last entry at 1530
6th, 10th and 13th Sept



"The Box that changed the World." It is 100 years since John Logie Baird experimented with television. This exhibition demonstrates how he did it and the uses it has been put to over the years. See examples of televisions from 1925 onwards; put yourself in front of a green screen and ride a waterslide; play some of the earliest video games, and much more.

museumofcommunication.org.uk

Street parking. Ramp available for steps from the street and a stairlift to exhibition levels. There are seats available in the exhibition area.



Burntisland

54 Erskine United Free Church Burntisland

Kirkbank Road, Burntisland KY3 9EW

🕒 1400 - 1600 13th Sept



Erskine Church is an iconic landmark in Burntisland, visible to everyone who passes through the town. Its outline can be seen on the RBS £10 note! The congregation dates back to 1738 and moved into this building in 1903. A highlight is the stained glass window 'the Light of the World'. The church is usually only open once a week for worship so this is a rare occasion to be able to come in and enjoy the beautiful architecture and surroundings. There will also be a display of documents, photographs, and models of the church. There will be guides available throughout the day to share the history of the building with you.

burntislandandkinghornchurch.co.uk/erskine-church-burntisland/

An access ramp is available and only the gallery is inaccessible. Seating is available throughout.



Burntisland

55 Burntisland Heritage Centre & Burgh Chambers

4 Kirkgate, Burntisland KY3 9DB

🕒 1000 - 1600 13th, 14th Sept



Burntisland's Burgh Chambers is an example of civic buildings' architecture from when each town had its own Council. In addition to the Chambers and the Burgh Court Room, there is an impressive collection of paintings, many telling the story of Burntisland's rich past. This year's exhibition celebrates the town's rich natural heritage from the summit of the Binn to the sands of the beach and then beneath the waves. This is a must-see, highly illustrated photographic exhibition bursting with colour, insight and inspiration. The exhibition also includes a large display of local fossils gathered by a resident expert. For younger visitors there will be a quiz about the exhibitions.

www.burntislandheritage.org.uk

Street Parking Unfortunately there is no wheelchair access to the Burgh Chambers on the upper floor. Seating is available on both levels



WEST FIFE



- 56** Saline & District Heritage Museum
- 57** Holy Name RC Church
- 58** Holy Trinity
- 59** St. Margaret's RC Memorial Church
- 60** Lathalmond Railway Museum
- 61** Abbot House
- 62** St Fillans Church

- 63** Aberdour Lapidarium
- 64** Forthview Inverkeithing Parish Church
- 65** Forth Bridges Lighthouse Museum & Light Tower.
- 66** Forth Bridges Heritage Centre
- 67** St James' Chapel
- 68** Scottish Lime Centre
- 69** Cairneyhill Parish Church

Saline

56 Saline & District Heritage Museum

Beside Saline Church, Main Street, Saline

 1100 - 1500 21st Sept



This year the village school, Saline Primary, will be celebrating 150 years and we have chosen that as our exhibition theme. Come and see memorabilia and photos of the school through the decades and share your own memories of your primary school with our museum volunteers. There will also be local and family history information in the museum and a guided tour of Saline old graveyard where you will find out about our quest to find the location of a missing 13th Century Church.

salinedistrictheritagesociety.wordpress.com/

Guided tour of Saline Old Graveyard
Seating is available in the nearby old churchyard



Oakley

57 Holy Name RC Church

Station Road, Oakley KY12 9NW

 1200 - 1600 21st Sept



Designed in in 1958 in an early Scottish Style and consecrated in 1965. Visit to see the outstanding stained glass windows by Gabriel Loire of Chartres. The church contains a small museum about its history.

www.stmargaretsdunfermline.co.uk

Guided tours are available throughout the day.



Dunfermline

58 Holy Trinity

East Port, Dunfermline KY12 7JE

 1300 - 1600 14th Sept



Fine Victorian church from 1891 by architect Rowand Anderson who also encased the attractive 1895 Hamilton two-manual pipe organ. Enjoy the peaceful atmosphere of this fine ecclesiastical building, and explore the features, including the fine reredos, and the lovely Kempe & Wilson windows.

holytrinitychurch.org.uk/

Hunt and seek quiz for children. Chair lift is available to enter church which contains a small number of steps.



Dunfermline

59 St. Margaret's RC Memorial Church

East Port, Dunfermline KY12 7JB

🕒 0900 - 1830 20/21st Sept



St. Margaret's is a vibrant parish incorporating 2 churches; St. Margaret's Memorial Church, Dunfermline and Holy Name Church, Oakley. Whether you live in Dunfermline or Oakley or are just visiting us, please be assured of our welcome and we hope that your visit to our beautiful churches and the shrine of St. Margaret of Scotland will be fruitful.

www.stmargaretsdunfermline.co.uk

Sat – 9am – 6.30pm (Mass is 10am-10.30am & 5.30pm-6.30pm). Sun 8.45am – 12pm (Mass is 9.30am-10.30am)



Dunfermline

60 Lathalmond Railway Museum

c/o SVBM, M90 Commerce Park, Lathalmond, Dunfermline KY12 0SJ

🕒 1300 - 1600 14th Sept



Lathalmond Railway Museum will be opening the doors to our locomotive sheds, not normally open to the public. Free guided tours will take place regularly from 1300-1600. In addition, our 2 railways will be in operation as usual, with Steam on our narrow gauge line. Usual ticket prices apply for train rides. Trains run 1300-1600. Our museum displays will also be open for free.

www.shed47.org

Museum and shop are wheelchair accessible but some limited access on tours.



Dunfermline

61 Abbot House

Maygate, Dunfermline KY12 7NE

 1000 - 1600 20th Sept



Abbot House is Dunfermline's oldest house at over 500 years old. With its distinctive pink colour, it is an architectural gem, full of character and unique features. The building has undergone many changes over the centuries and has been home and workplace to a wide range of people. It currently provides studio spaces for local designers and craft makers, and room hire for workshops and events. There is an artisan gift shop and coffee shop where you can sit and enjoy the special features of the house and garden.

www.abbothouse.org

Street Parking Seating is available throughout the house. Our coffee shop, gift shop, toilets and garden are all wheelchair accessible



Aberdour

62 St Fillans Church

Hawkcraig Road, Aberdour KY3 0SL

 1000 - 1600 20th Sept
1100 - 1600 21st Sept



St Fillan's church is one of the finest examples of Norman architecture in Scotland. This 'miniature Cathedral' sits in its own graveyard with views over the Forth to Edinburgh. The nave and chancel date from 1123. It was enlarged in the 15th century by the addition of a side aisle, and in the 17th by the small transeptual aisle. The church fell into disrepair in the 18th century and was restored in 1926. Recently St Fillan's celebrated its 900th Anniversary. It is probably the oldest church in Scotland. This year there will be a display about the Hewitt brothers who died within a few days of each other at the start of WW1.

forthviewchurch.org.uk/stfillans/

There will also be a display of the Church Silver. There are steps into the church



Aberdour**63 Aberdour Lapidarium**

7 Seaside Place, Aberdour KY3 0TX

 **1100 - 1600 20th, 21st Sept**

This is a chance to see an unrivalled collection of copies of 130 medieval carved stones from Britain and Ireland, above all Pictish. They were carved on sandstone based on the originals by sculptor Leslie Alan Reid, who used them as templates for cloth-rubbings which were sold in outlets such as the National Museum of Scotland and Historic Environment Scotland. The sculptor will be on hand to explain the designs on the stones and where and when the originals were created. A Lapidarium is a place where stone monuments and fragments of archaeological interest are exhibited!

In collaboration with the Aberdour Cultural Association.

WC**Inverkeithing****64 Forthview Inverkeithing Parish Church**

Church Street, Inverkeithing KY11 1LG

 **1300 - 1600 Sunday 21st**

Visit this Church to see one of the finest baptismal fonts in Scotland. Hear its remarkable story and get the chance to see our lovely stained glass windows, both old and modern. The Church will be open with a display of old photographs. There will be a group of volunteers there to welcome visitors.

forthviewchurch.org.uk/inverkeithing/

Guided walk of the town starting at 2.00pm opposite the Old Town House in Townhall Street.



North Queensferry

65 Forth Bridges Lighthouse Museum & Light Tower.

Ferry Hills Road, North Queensferry
KY11 1JP

 **0900 - 1800 20th, 21st Sept**



This Robert Stevenson Light Tower, built in 1817, is one of the first light towers constructed in Scotland. Its claim to fame is that it is the world's only operational light tower, and for a donation appointments can be made for you to light the only working Argand Oil Lap in the world; and gain a certificate of competence. Contact NQHTinfo@gmail.com for details."

www.nqht.org/visit-the-light-tower/

Self-guided trail around the Forth Bridge area, north & south. There is a playpark within 1 minute from the venue



North Queensferry

66 Forth Bridges Heritage Centre

Ferry Hills Road, North Queensferry
KY11 1JP

 **0900 - 1800 20th, 21st Sept**



The Forth Bridge Heritage Centre is housed in an original Victorian railway station that was completed in 1890, the same year that the Forth Bridge was opened. It houses a permanent gallery of Forth Bridge artefacts and exhibitions on – The Forth Bridge, The Queensferry Crossing, and a display on "Remembering the Ferries 1100-1964". There is also a drawing and craft area for children.

www.nqht.org/the-second-north-queensferry-station/

Leaflets providing a self-guided trail around the Forth Bridge area are available at the Heritage Centre."



North Queensferry

67 St James' Chapel

Ferry Hills Road, N Queensferry KY11 1JP

 0900 - 1800 20th, 21st Sept



Enjoy browsing an 11thC chapel and 18thC graveyard. Doors Open Days is one of the few occasions that this ancient site is open to the public. St Jame's chapel had been in use since the days of Robert the Bruce, but was destroyed by Cromwell in 1651. It then became the village burial ground and was managed by the 'Ferrie Sailers' who built the enclosing wall."

www.nqht.org/visit-the-chapel-of-st-james/

Self-guided trail around the Forth Bridge area, north & south.



Charlestown

68 Scottish Lime Centre

2 Rocks Road, Charlestown KY11 3EN

 1000 - 1600 20th Sept



We provide traditional buildings skills training courses, stone and mortar analysis and Building advisory services. We have a small exhibition area and lecture room , with space for practical demos.

www.scotlime.org



Cairneyhill

69 Cairneyhill Parish Church

3 Main Street, Cairneyhill KY12 8QT

 1000 - 1500 Sunday 21st



From 1752 Cairneyhill Church has served its congregation through various splits and unions, becoming part of the Church of Scotland in 1929. A simple building with the pulpit on the long wall, between two stained glass commemorative windows, it is considered of historic importance, having been in continuous use in what was its relatively unaltered form. It was restored externally in 2013 and has recently been upgraded internally (2021/22) making it available for local community groups and organisations to use. There are garden grounds and a Victorian Watch House, built to guard the church graveyard from body snatchers.

www.cairneyhillchurch.org.uk

Church Service 11:30 to 12:30. Guided viewing/walk around before and after morning service. Some limited access in the church and uneven ground in the gardens.



FIFE

DOORS OPEN DAYS 2025



Doors Open Days

Fife Council,

Fife House, Glenrothes, KY7 5LT

Tel 03451 555555 ext. 471813

Admin.DoorsOpenDay@fife.gov.uk

www.fife.gov.uk/doorsopendays

