



FIFE COAST &
COUNTRYSIDE TRUST

The Fife Coastline Challenge

Robbie Blyth, Head of Operations

Mission

Connecting Environment and People

Vision

We lead in the care of Fife's outdoors. Working together with you, we create a healthier environment that supports wellbeing and sustains the balance between people and the natural world





Our mission in action

River Restoration Projects

Improving habitats for biodiversity
Enhancing places for people to enjoy

Grounds Maintenance

NHS Fife partnership
Rebuilding bridges and footpaths
Climate-related challenges [erosion, flooding, storms]

Environmental Improvements

200 bins to aid recycling
Car parks resurfaced
Access to beaches

Education

Outdoor wellbeing activities
Outdoor learning for schools
Green health in Levenmouth

Conservation

Local Nature Reserve management
Biodiversity and Fife Climate Forest

Engagement

Sharing the Scottish Outdoor Access Code
Events and volunteering
Community talks



Kirkcaldy Pathhead Sands



The Coastal Challenge

Flooding:

When water covers normally dry land, often due to natural or human causes, and can lead to environmental, social, and economic impacts.

Solution:

Containment

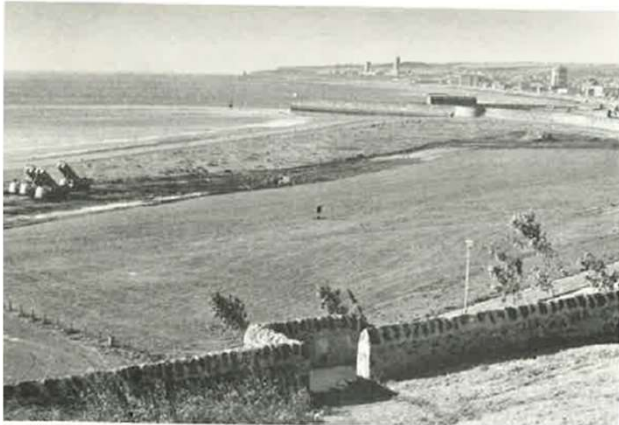
Soft Engineering

Hard Engineering

Managed realignment



Kirkcaldy Pathhead Sands



1978



1958

The Coastal Challenge

Coastal Resilience

History is a vast early warning system – it teaches us lessons from the past that help shape the present and guide future decisions.

Q: What would you do ?

- Containment
- Soft Engineering
- Hard Engineering
- Managed realignment



Culross 25th Jan 2024



The Coastal Challenge

Dead or Dying Whales :

Whales die on land because their bodies are adapted to the ocean's buoyancy. Without water to support their massive weight, gravity crushes their internal organs. Also, the thick blubber causes them to fatally overheat, and they can suffocate if the sea covers their blowholes. Humane, safe and sustainable disposal is a significant challenge.

Solution:

- Crowd Control
- Communication & Education
- Euthanise
- Decide Disposal Options
- Coordinate

experience • engage • enjoy



Culross 17th March 2025



The Coastal Challenge

Environmental Benefits:

On this occasion the 17-metre male Fin whale carcass was left in its original location to decompose naturally. The carcass enriched the coastal environment with nutrients. It provided an important food source for wildlife, especially fat and protein over the winter.

Disposal Options:

- Landfill
- Museum
- Whale Fall
- ✓ **Decompose Naturally**



Elie to St Monans - Fife Coastal Path



The Coastal Challenge

Coastal Erosion:

The wearing away of land along a shoreline by waves, tides, and currents, often made worse by climate change, rising sea levels, and human activity.

Solution:

Containment
Soft Engineering
Hard Engineering
Managed realignment



Elie to St Monans - Fife Coastal Path



Elie Train Station



St Monans Train Station

The Beeching Report, entitled "*The Reshaping of British Railways*," was published on 27 March 1963. The report resulted in significant changes to the British railway network and had wider impacts on communities and sections of the UK coastline.

Q: Did Dr Beeching get it wrong ?

The Coastal Challenge

Coastal Resilience

History is a vast early warning system – it teaches us lessons from the past that help shape the present and guide future decisions.

Q: What would you do ?

- Containment
- Soft Engineering
- Hard Engineering
- Managed realignment



Elie to St Monans – Fife Coastal Path



The Coastal Challenge

Coastal Resilience

History is a vast early warning system – it teaches us lessons from the past that help shape the present and guide future decisions.

A: What we did

- Soft Engineering
- Hard Engineering
- Managed realignment



Elie to St Monans - Fife Coastal Path



The Coastal Challenge

Coastal Resilience

History is a vast early warning system – it teaches us lessons from the past that help shape the present and guide future decisions.

A: What we did

- Soft Engineering
- Hard Engineering
- Managed realignment



Elie to St Monans - Fife Coastal Path



The Coastal Challenge

Coastal Resilience

History is a vast early warning system – it teaches us lessons from the past that help shape the present and guide future decisions.

A: What we did

- Soft Engineering
- Hard Engineering
- Managed realignment



Aberdour Silver Sands



The Coastal Challenge

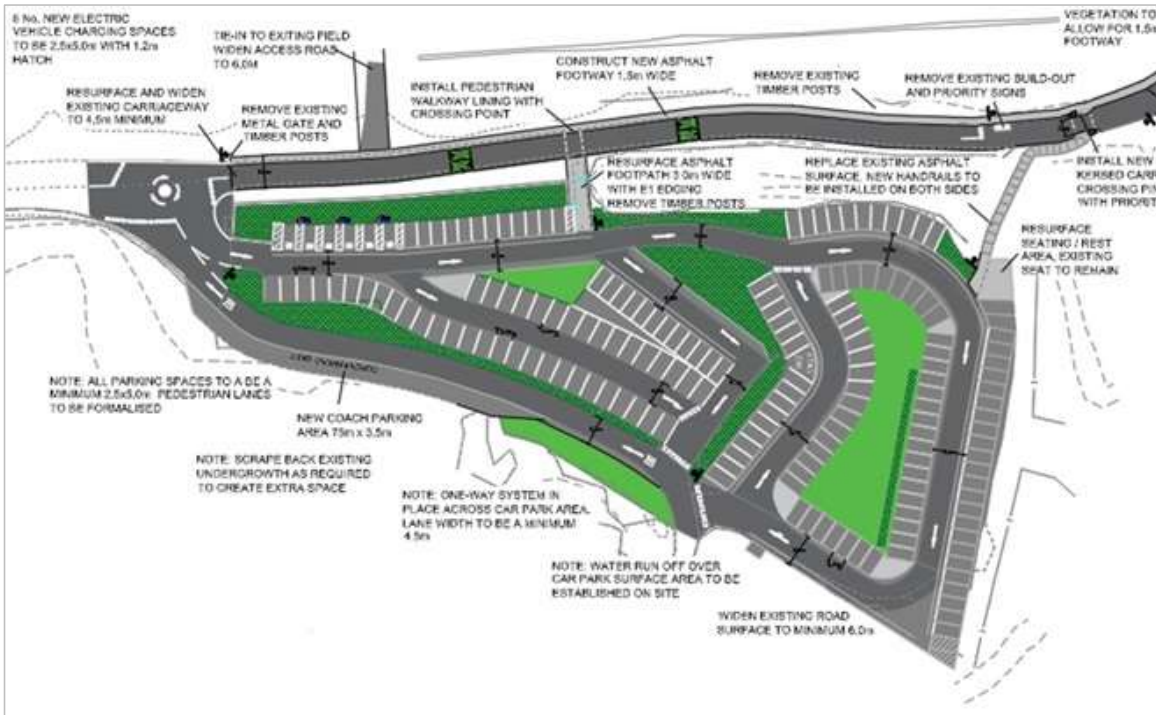
Managing Access

Key issues arising from ageing infrastructure and high levels of tourism.

What can you do:

- ✓ Source Capital Funding
- ✓ Source Revenue Funding
- ✓ Consult
- ✓ Smarter Working

Aberdour Silver Sands



The Coastal Challenge

Managing Access

Key issues arising from ageing infrastructure and high levels of tourism.

What can you do:

- ✓ Source Capital Funding
- ✓ Source Revenue Funding
- ✓ Consult
- ✓ Smarter Working



Engage with Key Decision Makers



The Coastal Challenge

Managing Access

Key issues arising from ageing infrastructure and high levels of tourism.

What can you do:

- ✓ Source Capital Funding
- ✓ Source Revenue Funding
- ✓ Consult
- ✓ Smarter Working
- ✓ **Engage with key decision-makers**



Engage with Key Decision Makers



The Coastal Challenge

Managing Access

Key issues arising from ageing infrastructure and high levels of tourism.

What can you do:

- ✓ Source Capital Funding
- ✓ Source Revenue Funding
- ✓ Consult
- ✓ Smarter Working
- ✓ **Engage with key decision-makers**



The Coastal Challenge

Managing Access

"You can please some of the people all of the time, you can please all of the people some of the time, but you can't please all of the people all of the time"

John Lydgate

But you can *"walk a mile in someone else's shoes"*

Indigenous American



Thank you



Robbie Blyth, Head of Operations



01592 656080



Robbie.Blyth@fifecountryside.co.uk



fifecoastandcountrysidetrust.co.uk